



In this issue

Senior Services provides
essential support

Pandemic: A college
year like no other

JFCS welcomes new
NextGen and J-Pride
Coordinators

Legacy giving:
Jeffrey Locketz

And more!

See pages 2-9 for everything you need to know about JFCS' first-ever **virtual** Benefit!

32nd ANNUAL Laugh on Their Behalf
VIRTUAL BENEFIT

Tune in
SAT
Dec 5



32nd ANNUAL *Laugh on Their Behalf* **VIRTUAL BENEFIT**

EVENING SCHEDULE



7:00

Tune in for an entertaining program featuring quirky bits of fun, touching moments, honoring our Friends of the Family award recipients and a chance to support JFCS.

7:45

Don't miss comedian Steven Scott, performing live from New York!

Inside this Issue



8 *Annual Benefit performer: Steven Scott*

10 *A college year like no other: challenges of pandemic impact students in numerous ways*

11 *Introducing new NextGen Coordinator Alyson Jones*



12 *Honor/Memorial Card Tributes*

18 *Endowment Funds*

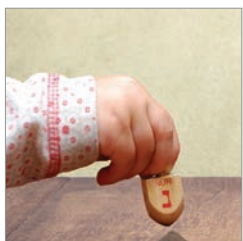
23 *PJ Library Parent Connectors*

24 *Legacy giving: Jeffrey Locketz*

26-27 *Senior Services: Providing support during the pandemic*

28 *Hag Sameach program seeks donations*

29 *New J-Pride Coordinator Miriam Graham*



directions magazine is published by Jewish Family and Children's Service of Minneapolis, a beneficiary of the Minneapolis Jewish Federation.

Board President
Jeff Barin

Chief Executive Officer
Judy Halper

Communications Director
Lori Leavitt

Writer/Editor
Marc Ingber

Graphic Designers
Jen Clough
Stowe Silver
Megan Wiese



Claims Conference ועידת התביעות
The Conference on Jewish Material Claims Against Germany

JFCS is committed to the inclusion of all people.



JOIN US ON SOCIAL MEDIA

www.jfcsmpls.org

FACEBOOK [jfcsminneapolis](#)

LINKEDIN Jewish Family and
Children's Service of Minneapolis

INSTAGRAM [jfcsminneapolis](#)



From Judy's desk

There has been much to feel uncertain about as we have traversed these many months of the pandemic. We have learned to work from home, adjust our children to “distance learning,” eyeball the distance of six feet to make sure that we maintain proper physical distancing, and so much more.

I sometimes wonder if some of these behaviors will stay with us long after COVID-19 leaves our lexicon. Will people wear masks to theaters and sporting events? Will we continue to order groceries online? Will we gather next December at the Marriott for our 33rd Annual JFCS Benefit? Okay, that one I just threw in to keep your attention focused on what is happening in a few weeks.... JFCS' 32nd Annual “Laugh on their Behalf” Benefit!

This year we will come together virtually, of course, but there are so many surprises in store and so much fun to enjoy! If you haven't already purchased your \$25 ticket, please do so. It's easy! Just go to www.jfcsmpls.org and make your purchase today. We promise all the fun and laughter as previous years, but this year you can watch in your jammies from the comfort of your favorite chair!

Which brings me to my next point – while so many of us have cozy homes and amenities to keep us entertained during this challenging time of limited socialization, there are so many of our community members who are struggling. The pandemic has certainly caused all of us stress, but imagine the strain it has put on families who were just getting by before we all began to stay at home.

So many children rely on schools for more than the education they provide. Missed meals, activities, and routines are just some of the things that have disrupted the lives of children, along with barriers to keeping up educationally. Keep in mind the number of families who lack the financial ability to upgrade routers and internet service, let alone acquire new computers and devices for staying current and in the game. Many parents have had to leave jobs or cut back on hours in order to care for, educate, and provide safety for their children.

When it comes to mental health needs, there's no doubt that anxiety, depression, sleep deprivation, and other challenges are affecting people, regardless of age or disposition. The ability to adapt to new situations is often our strength, but ultimately it can come at a cost. At the end of the day, we all need a sense of normalcy, and this has been a year that has been anything but normal.

Which brings me to the following; It has also been a year of amazing resilience and innovation. I am absolutely charmed by the brave can-do attitude I observe almost every day. Yes, I see it at JFCS, where staff are flexing their creative muscles to offer service to clients and participants in new, safe ways consistent with all the precautions we must accept at this time. I also see it most every place I go. Doctor and dentist offices have been transformed to offer maximum safety for patients. Grocery stores have carts disinfected and ready for customers. Voting was made easier than ever before, facilitating access and engagement for all of us. The list goes on and on.

Many of you may be aware of the world-famous chef José Andrés. He has been incredibly committed to meeting the hunger needs of people, particularly those who are financially disadvantaged. Since the beginning of the pandemic, Chef Andrés has organized chefs, cooks, and others in the food industry to provide meals to families in need, and to frontline medical staff who are working valiantly to offer care and healing to those who are sick and suffering. In addition to his wonderful, thoughtful, innovative and caring service, Chef Andrés suggests the following: “Let's weaponize empathy” as the key to surviving this difficult time. So wise!

Join us on Dec. 5 as we raise money to support the important and compassionate JFCS services so many rely on. Let's demonstrate our creativity and our empathy, and have a few laughs while we're at it!

Judy Halper, JFCS Chief Executive Officer

MAJOR SPONSORS & UNDERWRITERS

*A heartfelt thank you
for your support*

Diamond Sponsor

Melanie Barry and Family/
Twin City Fan Companies Ltd.

Platinum Sponsors

Mike and Linda Fiterman
Family Foundation

Andy & Cass Stillman

Gold Sponsors

Anonymous (1)
The Dachis Family
Lynne & Andrew Redleaf Foundation
Nancy & Kevin Rhein
Tankenoff Families Foundation
Marsha & Gary Tankenoff and
Hindy & Scott Tankenoff

Silver Sponsors

Anonymous (1)
Sarah & Mike Badower
Etta & Mike Barry
Shari & Ronald Barry
Carole Davidson
Steve Kalin, Lisa Doty and Family
Kris & John MacDonal
Minneapolis Portfolio Management
Group/The Grodnick Family

The Jay & Rose Phillips Family
Foundation of MN
Sheva & Tom Sanders
Liba & Tom Stillman
Elliot Wolson

Opal Sponsors

Kerry & Scott Bader
Lurie, LLP
Maslon LLP
Robins Kaplan LLP

Emerald Sponsors

Patrick Atkinson & Julie Spangler
Sally & Eric Bressler
CBIZ MHM, LLC/Howard Kaminsky,
Bob Karon & David Levi
Jennifer & Richard Ezrilov
Dani & David Gotlieb
Susan & Peter Gross
Cindy & Doug Kanter
Horovitz Klarfeld Lang Family &
Bearman Funds
Elaine Kuretsky, Peter Kuretsky &
Family and David Kuretsky & Family
in loving memory of Howard
Sheri & Steve Lear
Debbie & Gil Mann

Minnesota Vikings
Jill & Jeff Mirviss
ResiPM, LLC, Robert Kramer,
Susi Saxl and Elliot Upin
Ryan Co.
Schechter Dokken Kanter CPAs
Rhonda Stein & Stuart Goldenberg
The Tailwind Group
Kathy & Howard Zack

Special Gift

Underwriters - Cindi & Harold
Goldfine

Online Auction

Sponsor - Coordinated Business
Systems, Ltd and White Bear
Mitsubishi

NextGen Virtual After Party

Randi & Barry Wolfish

The above list of sponsors is current through 10/15/2020

BENEFIT STEERING COMMITTEE

Co-Chairs

Ron Barry
Sheri Fine

Committee Members

Shari Barry
Pam Dworsky
Linda Fiterman
Heidi Geddis-Grimsby
Roni Gingold
Anne Hope
Shari Levitt
Liz Lewis


Dayna Lifson
Jeffrey Lifson
Pati Rosenzweig
Barry Schwabe
Randi Wolfish
Dawn Zouber
Steven Zwick





LAUGH ON

32nd ANNUAL *Laugh on Their Behalf*
VIRTUAL BENEFIT



HOSTED BY
RON AND
SHERI

BEHALF
THEIR

*Tune in
SAT, Dec 5*



Comedian Steven Scott's spot-on impersonations add a '3rd dimension' to laugh-filled stand-up set

Be sure to catch Steven's virtual performance at JFCS' 32nd Annual Benefit

Steven Scott has had a knack for impersonations from a very young age, doing impressions of kids in his class, teachers and even family members. In an interview with JFCS, he recalled the time that his father – a newscaster who worked the late-night newscast – called Steven and his sister from work to say goodnight.

Steven talked to his dad first as himself and then pretended to get his sister on the phone, but stayed on the line and actually talked to his dad as his sister, fooling him in the process. "My mom was cracking up watching it," he said.

With such a knack for impersonations, Steven naturally caught the entertainer bug at a young age, but admits he didn't always dream of being a stand-up comedian. As a kid, he enjoyed acting in plays, and thought he wanted to be an actor. But early in his career when a few professional comedians suggested he try stand-up he decided to give it a go, and 25 years later he is still at it.

As a comedian, actor and host, he's worked with some of the biggest names in show business and has made numerous TV appearances on Comedy Central, NBC, FOX, VH1, SiriusXM and "America's Got Talent." He's lent his multi-faceted voice to a number of commercials, films and video games and traveled to all seven continents performing comedy clubs, conventions, cruises, colleges, festivals, roasts, military bases and more.

It's so important to be able to laugh ... this year especially. »

Even though impersonating different voices and sounds is one of his trademarks, Steven stresses that he is a comedian, and not an impressionist. "It peppers my set where it belongs," he said of doing impressions of everything from a president to a subway train. "I like to call it 'adding a third dimension' to my stand-up."

Some of his favorite comedians growing up were those who incorporated voices and impersonations into their set, like Eddie Murphy and Billy Crystal. As a longtime member and former governor of the legendary Friars Club, Steven was able to perform with Crystal in attendance and said it was a rush to get praise from the legendary comedian. "He told me, 'You were hilarious,'" Steven recalled (doing a pitch perfect impression over the phone of Crystal's voice). "It was unbelievable. When you get to meet your heroes and share the stage with them, it is pretty amazing."

But sharing the stage with legends is only one perk of the job. One of the highlights of the early part of Steven's career was when his former high school hired him to perform at a fundraising event. "I did impressions of the teachers and administrators right to their faces, to roaring laughter," he said. "I said, 'You're paying me to do something you would have thrown me into detention for.' As a comedian, I'm making a living doing the same stuff I was getting punished for as a kid."

Like all performers, 2020 has been a difficult year for Steven. His last live stand-up show was on March 1. He was supposed to perform on a cruise later that month, which got cancelled. He has been performing virtually since then, as he will for the JFCS 32nd Annual Benefit. He was looking forward to coming to Minnesota – it would have been his 43rd state to perform in. Also – even though he grew up on the East Coast – he is a Minnesota Vikings fan and was planning to attend a game when he was in town.

Nevertheless, he is very excited to perform as part of JFCS' first-ever virtual Benefit. "I'm thrilled JFCS is still doing it because it's a great cause and a great event," Steven said. "We're going to make it a great time no matter what. I'm really looking forward to it. It's so important to be able to laugh – this year especially."

A heartfelt thank you

A huge heartfelt thank you to all who made the
VIRTUAL JFCS 32nd Annual *Laugh on Their Behalf* Benefit happen!

THE SHOW

COLD OPEN

Lisa Furman
Judy Halper
Marc Ingber
Lori Leavitt
Peggy Mandel
Dana Rubin
Scott Rubin
Haylee Saxon
Megan Wiese

OPENING CREDITS

Megan Wiese – editor

OPENING AND CLOSING MONOLOGUES

Sheri Fine, Benefit Co-Chair
Ron Barry, Benefit Co-Chair

PRESS CONFERENCE

Jeff Barin
Judy Halper
Sheilah Howard
Marc Ingber
Ruth Paley
Bob Tomasik

THANK YOU VOLUNTEERS COMMERCIAL

Josh Goldberg (Voiceover)
Jennifer Ezrilov

SPONSOR SKETCH

Jaye Snyder
Natalie Zamansky

FRIENDS OF THE FAMILY

Carole Davidson
Judy Halper
Dawn and Danny Zouber
and Family

MUSICAL NUMBER

Aleeza Mandel (Vocals)
Joel Mandel (Piano)

PROGRAM/FUND-A-NEED VIDEO

Annie Berg
Jemma Merrick
Stacey Spencer
Becky Sulkin
Our gracious program participants

THE ASK

Jeff Barin
Judy Halper

JFCS UPDATE

Ron Barry
Sheri Fine

PROMOTIONAL VIDEOS

Ron Barry and Sheri Fine
Alyson Jones and Max Hendrix
Steven Scott

THE TEAM

JFCS DEVELOPMENT

Dana Rubin, Director
Peggy Mandel, Annual Benefit
Coordinator
Angie Podvin, Development
Manager & Database
Administrator
Adam Oliansky, Development
Coordinator
Alyson Jones, Development
Associate-NextGen Coordinator

JFCS MARKETING AND COMMUNICATIONS

Lori Leavitt, Director
Jennifer Clough, Designer
Marc Ingber, Writer
Stowe Silver, Designer
Megan Wiese, Designer, Editor,
Videographer, Website

SCRIPT WRITER/LYRICIST/ COMPOSER

Aaron Gabriel, Composer and
Theater Artist

PRODUCTION COMPANIES

AVEX
Handbid
Dale Bluestein/PartnershipMEDIA





A college year like no other: challenges of pandemic impact students in numerous ways

JFCS Counseling can provide telehealth therapy for students facing mental health challenges

By Jill Kozberg, MA, LP •
JFCS Mental Health and
Senior Services Director

As a mother, aunt, and friend to college students – and spouse of a college professor – I’m hearing first-hand how the pandemic is impacting college students. The impact is multi-faceted; financial, academic, social, emotional, and every combination of these factors.

While many students have been prevented from returning to their campus communities, those who have been able to go, are seeing significant limitations to the “college experience.” From some in-person classes, to quarantines, to 100% distance learning, to lockdowns, the restrictions on students’ movements has been particularly difficult.

Being put on quarantine can be very overwhelming for many students, especially when they are prevented from engaging in their usual coping activities. For example, when students are told they cannot leave their buildings to go for walks, runs, hikes, or bike rides, it significantly curtails their ability to manage anxiety. Some find old, destructive habits have been triggered. All of this also has a negative impact on students’ abilities to concentrate and focus on school work.

Adjusting to distance learning has many challenges. Students are finding they are unable to create classroom communities, either due to asynchronous learning, or to a lack of interaction, as all classmates have their video cameras off during class. This leads to increased isolation and a feeling they need to teach themselves very challenging material. As a result, they feel they are having to learn in a vacuum.

Students may spend 12 hours a day on screens, feeling stressed and overwhelmed, and stuck indoors. One undergraduate student

commented that “there is never NOT work to do; everything feels like homework, including watching lectures online.” With the lack of structure, it’s easy to get the days confused and miss classes and deadlines. The days begin to blur together.

It’s perfectly normal to start the school year with some anxiety, even for experienced college students, but this year that anxiety is not limited to finding friends, missing home, managing finances and managing classes. This year students are dealing with the extra anxiety due to the ever-present threat of COVID-19. Students are trying to make decisions, some of which may potentially put them at risk for the virus. Some are wondering whether they should try to get the virus just to get it over with. Others are grappling with the warnings coming from their colleges and universities, families, and medical communities. Many have already had to face the virus head on, away from family and friends, often having to temporarily move to an isolation facility for COVID-positive students. Even for those for whom the virus was mild, having to face it, and the unknown, alone can have a far-reaching impact.

Another complicating factor is that the communication is often not ideal, with colleges and universities at odds with local health departments at times. Some students are considering going home, while others are told they cannot return home and risk exposing more vulnerable loved ones to increased risk. Some are having to find new housing as dorms are shutting down. For those living in dorms for the first time, they may be struggling with a difficult roommate situation, while being simultaneously told they cannot leave their rooms.

According to one study, 71% of college students surveyed indicated increased levels of stress, anxiety and depressive thoughts due to worry about their own health, the health of loved ones, difficulty concentrating, sleep disturbance, reduced social interactions, and increased academic worries. Further, many students report struggling with increased thoughts of suicide, and others are also dealing with the loss of a loved one to COVID while away from their support systems.

According to Inside Higher Ed, October is historically a month in which students tend to experience a dip in mental health, and that is during non-pandemic times. College counseling centers are anticipating increased needs without having increased resources to meet the needs. Some students have reported that the pandemic has made it harder to access mental health care, as they deal with the ongoing social, financial, and educational consequences of it.

The range of experiences and reactions to the pandemic on college students is broad. Some are able to move through it more easily than others. It is definitely taking a toll on students’ social, emotional and academic expectations. There is no doubt that this is a college year like no other.

At JFCS, we’re here to help. We have licensed, experienced therapists on staff who are available to meet with students via secure, confidential telehealth. If you, or a student you know, is experiencing any of this and would like some additional support, all you have to do is call. Our number is 952-546-0616.

JFCS NextGen welcomes new Coordinator, **Alyson Jones**

Why did the NextGen Coordinator position appeal to you?

NextGen and JFCS have become a huge part of my life here in Minnesota. I have had the honor of being a NextGen Board Member for the last three years. NextGen has given me the tools to be a part of the Jewish community in a meaningful way and to volunteer as well as give back. When the opportunity came along to work behind the scenes and join a wonderful team and agency, I knew I needed to take a chance and go for it.

How has NextGen adapted its programming and fundraising mission during the pandemic?

This pandemic has challenged everyone in so many ways. It has challenged NextGen to think outside of our traditional social programming, and find ways to provide volunteering opportunities from home as well as safely in small groups. In the upcoming weeks and months, we will be implementing new ways to interact on social media and provide opportunities to volunteer, as well as a space to learn and educate ourselves.

How do you see the effects of the pandemic or social/racial justice issues impacting NextGen in the coming months and years?

In many ways, everything has changed and in so many ways everything has stayed the same. NextGen still exists to inspire the next generation to connect with one another and the Jewish community through Tikkun Olam (repair of the world). NextGen will continue to use our creativity and find ways to meet the needs of the larger community. Just like the rest of the world, Jewish young adults are here and ready to fight for what is right, educate, learn, grow and provide support in any way we possibly can.



welcome.

Honor/Memorial Card Tributes

In Honor of

Beverly Aaron
Two Grandchildren's Weddings
Sura Fraida & Arnie Blatt

Audrey Abrams
Retirement
Stacey & David Spencer

Sheri & Steve Abrams
20th Wedding Anniversary
Cindy & Joel Shapiro

Evelyn Abramson
100th Birthday
Cindy & Donald Brown

Allan Appel
Special Birthday
Jean Efron

Lorraine Applebaum
95th Birthday
Joyce Moscoe

Terry & Jack Appleman
40th Wedding Anniversary
Rollye & Chuck Rinkey

Lisa Aronauer
Birthday
Ann & Neil Covin

Rose Averbach
Birthday
Jill & Jeff Rabinovitz

Molly Bader
Birthday
Scott & Kerry Bader
Kristi Bader & Gary Swartz
Stuart Bader & Rick Werlin

Walter Baum
Birthday
Barbara & Lee Bearmon

Linda & Paul Benenson
Brad and Lara's Marriage
Joyce Moscoe
Gail & Bill Ribnick
Kristi Bader & Gary Swartz

Sandy & David Benenson
Birth of Sophie Bea
Barbara & Zola Friedman

Jane & Steve Benowitz
Wedding Anniversary
Jenny & Jon Benowitz

Steve Benowitz
70th Birthday
Rollye & Chuck Rinkey

Shelli & Howard Berger
50th Wedding Anniversary
Harolyn Rudoy

Josie Berman
Graduation
Barbara & Zola Friedman

Toby & Frank Berman
Special Wedding Anniversary
Linda & Tom Sklar

Darrel Besikof
75th Birthday
Heather & Kevin Besikof
Linda & Miles Braufman

Beth & Steve Birke
Ellie's Wedding
Dana Rubin

Bonnie & David Blumberg
55th Wedding Anniversary
Barbara & Neal Frank

Shussie & Allen Blumenthal
Birth of Great-Grandsons Noah
James & Asher Miles
Barbara & Zola Friedman

Alexander Botvinnik
Work With Transportation
Program
Marilyn Rovner

Eileen Bream
Special Birthday
Marilyn & Richard Chern
Carole Davidson

Cindy Brown
Mother's Day
Carey Brown and
Gregg Gardner

Donald Brown
Father's Day
Carey Brown and
Gregg Gardner

Ronnie Burstein
New Home
Barbara & Zola Friedman

Carole Cera
Birthday
Mari Waterous

Marilyn Chern
Special Birthday
Rollye & Chuck Rinkey
Dawn & Danny Zouber

Audrey & Jim Cohen
Marriage
Barbara & Zola Friedman

Bobby & Elliot Cohen
Happiness in New Apartment
Judy Graceman

Dina & Matt Cohen
Halle's High School Graduation
Jana Rubin

Rita Covin
Special Birthday
Heather & Kevin Besikof
Linda & Miles Braufman
Margie & Stuart Cohen
Peggy & Billy Cohn
Ann & Neil Covin
Dee Dempsey
Judy & Michael Emmons
Judy Graceman
Diane & Malin Greenberg
Jane & Norman Gurstel
Karen & Irving Katz
Joanie Levinsohn
Lois Liss

Marsha Liss
Nancy Liss
Marilyn Marker &
Bud Shapiro
Suzi Nathanson
Shelly Reichert
Randee & Sam Wolfson
Ellie & Mark Wolpert
Shirley & Larry Zipkin

Karen & Morris Davidman
50th Wedding Anniversary
Patti Baskin

Allie & Mark Divine
Birth of Daughter, Elizabeth
"Bea" Raye
Marlene Goldenberg &
Bobby Patrick
Judy & Andy Halper
Jane & Todd Lifson
Dana Rubin

Meredith Dworsky
College Graduation
Debbie Dachis Gold &
Michael Gold

Terry and Brooks Edwards
Jeremy and Nicole's Marriage
Renee Gainsley
Joan Gainsley

Wendy & Jeff Eisenberg
4th Wedding Anniversary
Vicki & Howard Londer

Judy & Michael Emmons
55th Wedding Anniversary
Marcia & Mark Cherniack
Diane & Richard Cohen
Rita & Larry Covin
Elaine & Gary Dachis
Dee Dempsey
Judy Graceman
Shelly Reichert

Marja Engler
Special Birthday
Rhonda Stein & Stuart

Goldenberg
Gloria Jaffe
Gena & Joe Janetka
Shelly Reichert
Roz & David Schwartzman

Janet Etshokin
90th Birthday
Lee Moral

Barbara & Ronald Federman
Wedding Anniversary
Marion & Steven Kahn

Sandy Feiler
Special Birthday
Anna & Charles Silverman

Ziva & Joel Fink
Daughter's Wedding
Stacey & David Spencer

Josh Fink
Bar Mitzvah
Ann Hunegs

Caren & Robby Finkelstein
Marriage
Michael Finkelstein

Jerry Frank
80th Birthday
Barbara & Neal Frank

Leland J. Frankman
80th Birthday
Joanne Ferraro &
Bob Beugen

Raleigh Fromstein
10 Years Cancer-Free
Layne & Dave Rosen

Richard Fromstein
60th Birthday
Layne & Dave Rosen

Robin Gelles
65th Birthday
Melanie & Vic Greenstein

Rosalie & Andrew Gellman
Birth of Granddaughter Poppy
Sally Forbes Friedman

Bruce Gershman
70th Birthday
Molly & Sid Bader
70th Birthday
Roz & David Schwartzman

Karen Gershman
70th Birthday
Ellen & Earl Reinhardt

Sim Gesundheit
Special Birthday
Nancy & James Proman
Betsy & Mayer Tapper

Helen & Michael Getzkin
45th Wedding Anniversary
Cindy & Donald Brown

Steven Godes
80th Birthday
Alan Miller

Diane & Louis Goldenberg
Grandchildren's B'Nai Mitzvah
Laura Cohen and Jim Brandt
Karen & Morris Davidman
Suzanne & Everett Weinstein

Audrey & Mace Goldfarb
60th Wedding Anniversary
Patti Baskin

Cindi & Harold Goldfine
50th Wedding Anniversary
Carole Davidson
Arlene & Zvi Leibovich

Harlee Goldsteen
Special Birthday
Barbara Grossman

John Gordon
Special Birthday
Linda & Miles Braufman

Nancy & Stephen Gordon
50th Wedding Anniversary
Roberta Hoffman

The following
donations were
received between
June 1 and
Aug. 31, 2020.

Mollie & Ethan Greenberg
Birth of Son Grey Harris
Roz & Fred Kaplan

Joan Grossfield
Special Birthday
Sandra & Louis Bennett

Rachel Fisher
Bat Mitzvah
Debra Hahn Fisher

Judy Halper
Selection As NJHSA Board Chair
Sherri & Larry Feuer
Barbara Patchen
Norman Winer
Scott Winer
Kathy & Howard Zack

Mr. & Mrs. Bruce Harris
Special Wedding Anniversary
Simie & Al Kaye

David J. Harris
In His Honor
Stacey & David Spencer

Nancy & Bob Hartman
45th Wedding Anniversary
Molly & Sid Bader
Stuart Bader & Rick Werlin

Howard Held
Birth of Grandchild
Sheldon Klugman

Denise & Bob Hodes
Birth of Grandson
Anne Dachis

Jean Holloway & Avi Nahum
Birth of Granddaughter
Sally Forbes Friedman

Diane & Irwin Ingber
40th Wedding Anniversary
Marilyn & Richard Chern
Marilyn Swatez

Joe Ingber
90th Birthday
Evie & Alan Ingber

Phillip Jaffe
In His Honor
Mendel Melzer

Eve Javinsky
High School Graduation
Millie & Howard Segal

Julia Javinsky
High School Graduation
Millie & Howard Segal

Ryan Kadet
High School Graduation
Roz & Fred Kaplan

Rosann Kahner
90th Birthday
Diane & Malin Greenberg

Cindy & Doug Kanter
35th Wedding Anniversary
Sally Forbes Friedman
Leslie & Lex Nerenberg
Ellen & Earl Reinhardt
Marilyn & Ralph Shapiro

Marty Kaplan
Father's Day
Adrienne Kaplan

Isla & Frank Katzovitz
30th Wedding Anniversary
Stacey & David Spencer

Jane & Robert Ketrosier
Birth of Grandson Grey
Sally Forbes Friedman
Dana Rubin

Jane & Robert Ketrosier
Wedding Anniversary
Kathy & Howard Zack

David Khabie
Graduation
Anna Simon

Miriam Kieffer
Special Birthday
Simie & Al Kaye
Harriett & Harvey Rochlin

Barbara Klick
Award From The Minneapolis Jewish Federation
Judy & Andy Halper

Roz Kloner
75th Birthday
Marilyn & Richard Chern

Jessica & Josh Kohen
Birth of Sophia Rae Kohen
Fay & Mitchell Kaye

Donamae Koppelman
Special Birthday
Cathy & Richard Broms
Joyce Moscoe

Abby Kotlarz
Graduation
Barbara & Zola Friedman

Ronna & Jay Landy
50th Wedding Anniversary
Marilyn & Richard Chern

Robert Latz
Special Birthday
Arlis Grossman

Ray Lazar
Special Birthday
Karen & Irving Katz

Lori Leavitt

In Her Honor
Liba & Tom Stillman

Sari & Harold Lederman
Birth of Granddaughter Avery Hope
Barbara Harris

Sue Leon
Birthday
Louise & Jerry Segal

Joanie Levey
Birthday
Barbara & Lee Bearmon

Stephen E. Lieberman
85th Birthday
Anne & Allen Wolf

Joyce & Robert Liebo
Chase's Bar Mitzvah
Paula & Robert Maisel
Suzanne & Everett Weinstein

Gayle Lightowler
Special Birthday
Shirley & Larry Zipkin

Jodi & Noah Lipschultz
Special Wedding Anniversary
Marilyn Swatez

Margaret Macneale & Gary Cohen
40th Wedding Anniversary
Sheryl Cohen & Dan Fink

Marcia & Philip Marcus
50th Wedding Anniversary
Carolyn & David Aberman
Melanie & Vic Greenstein
Roberta & Howard Liszt
Karen & Alan Winner

Bob Mersky
75th Birthday
Linda & Miles Braufman
Marcia & Mark Cherniack
Mitzi & Terry Kane
Jana Rubin

Abbie Miller
Special Birthday
Shelly Reichert

Bobbie & Alan Miller
50th Wedding Anniversary
Arlene Badiner
Joanne & Douglas Savitt

Alan J. Miller
Birthday
Sandra & Louis Bennett
Linda & Les Fieldman

Emma Miller
In Her Honor
Ella Ingber

Lydia & Jonathan Miller
Special Wedding Anniversary
Linda & Les Fieldman

Mark Miller
50th Birthday
Linda & Les Fieldman

Sue Muscoplat
Special Birthday
Paula & Arvin Cohen
Ann & Neil Covin
Debra & Scott Grayson

Sandy & Sheldon Olkon
Special Wedding Anniversary
Karen & Irving Katz

Andrea Ornstein
Special Birthday
Linda & Miles Braufman

Ruth Paley
Special Birthday
Patti Baskin

Esta & Harry Palter
60th Wedding Anniversary
Karen & Morris Davidman

Charlene Plitman
Special Birthday
Loni & Darrell Ansel
Shelly Reichert
Shirley & Larry Zipkin

Shirley & Burt Politz
70th Wedding Anniversary
Shelley Kornblum & Mickey Greenberg

Jill S. Rabinovitz
45th Birthday
Linda & Miles Braufman

Jill & Jeff Rabinovitz
New Home
Linda & Miles Braufman

Ron Rabinovitz
Special Birthday
Linda & Miles Braufman

Joyce & Edward Ratner
Birth of Grandson
Arlene & Hill Sweet

Kevin Rhein
Becoming a Board Member of the NJHSA
Sherri & Larry Feuer

Heather Brey & Shari Robbins
Birth of Parker
Amy & Lee Friedman

Shirley & Freeman Rosenblum
Birth of Grandchild
Barbara & Zola Friedman

Eileen Roston
75th Birthday
Marilyn & Richard Chern

Michel Rousseau
Marriage
Amy & Lee Friedman

Elaine Rubin
65th Birthday
Heather & Kevin Besikof
Ann & Neil Covin

Wendy Rubin
70th Birthday
Diane & Richard Cohen
Elaine & Gary Dachis
Karen & Morris Davidman
Dee Dempsey
Judy & Michael Emmons
Perri & Steven Levitus
Susan & Richard Proman
Ellen & Earl Reinhardt
Harriet Swatez

Sheryl & Randy Rutzick
Hannah and Alex's Marriage
Sybil Rubin

Vic Sandler
Presentation at Adath
Phyllis & Rabbi Barry Cytron

Annette Sandler
Retirement
Sheri & Scott Yarosh

Joanne & Douglas Savitt
45th Wedding Anniversary
Cindi & Harold Goldfine

Lisa & Ed Schatz
25th Wedding Anniversary
Rita & Larry Covin

Rivka Schechter
Special Birthday
Stacey & David Spencer

Devorah & Sam Schlein
Birth of Avery Hope Schlein
Margaret Macneale & Gary Cohen

Judy Schumeister
65th Birthday
Marilyn & Richard Chern

Roz Schwartzman
Birthday
Gloria Jaffe

Robin & Nolan Segal
50th Wedding Anniversary
Gail Asher
Raleigh Dove
Janet Flam
Melanie & Vic Greenstein
Roberta Hoffman
Robin & Bryan Landy
Harriet & Nathan Newman
Ricki Roberts & Mark Simon

Howard Segal
Father's Day
Mardi & Mark Kunik

Howard Segal
Birthday
Mardi & Mark Kunik

Stan Segelbaum
90th Birthday
Judy Graceman
Joanie Levinsohn
Marilyn Marker & Bud Shapiro

Bonni Shapiro
Special Birthday
Dee Dempsey
Judy & Michael Emmons
Marilyn Marker & Bud Shapiro
Marcia & Allen Oleisky
Shelly Reichert
Sandra Scherling & Louie Inks
Linda & Tom Sklar
Shirley & Larry Zipkin

Bud Shapiro <i>Special Birthday</i> Phyllis Sudit Shelly Reichert	Jacob Thiels <i>Graduation</i> Anna Simon	Tammy & Carl Birnberg Carlyn & Paul Blum Linda & Miles Braufman Ricki Butwinick Marcia & Mark Cherniack Margie & Stuart Cohen Peggy & Billy Cohn Rita & Larry Covin Elaine & Gary Dachis Dee Dempsey Judy & Michael Emmons Susan Goldman Reva Gould Judy Graceman Jane & Norman Gurstel Simie & Al Kaye Elaine Kuretsky Roberta & Howard Liszt Sharon & Douglas Mangine Ellen & Dana Nelson Linda & Jeff Noddle Shelly Reichert Ellen & Earl Reinhardt Harriett & Harvey Rochlin Cheryl & Steven Rosen Janet & Robert Sabes Carol & Sheldon Segal Susan Chalfen & Dan Sillers Linda & Tom Sklar Sheryl & Edward Weiner Anne & Allen Wolf	Linda & Alan Harris Stacey & David Spencer	Sue-Ann & Gary Garvis Shirley & Larry Zipkin
Julie & David Sherman <i>40th Wedding Anniversary</i> Judy & Andy Halper	Isaac Trockman <i>Graduation</i> Anna Simon		Phyllis Harris Ardis & Thomas Wexler	Neil Gitlin Scott Burstein
Julie & David Sherman <i>Birth of Grandson Sonny</i> Judy & Andy Halper	Helen Varon <i>Special Birthday</i> Toby & Frank Berman		Dale Hillman Rita & Ron Kelner	Steven Gottlieb Harriett & Harvey Rochlin
Susan & Michael Shields <i>Birth of Granddaughter</i> Sheldon Klugman	Sharon Wallack <i>Birthday</i> Paula & Arvin Cohen		Miriam & Robert Kleinbaum Eileen & Harold Scherling	Percy Greenberg Patricia Kenton & Philip Politz
Greg Shirbroun <i>Marriage</i> Amy & Lee Friedman	Janice & Bruce Waller <i>Wedding Anniversary</i> Barbara & Lee Bearmon		Marcia & Denny Letourneau <i>Hospitality</i> Vicki Schraber	Harvey Gurewitz Rita & Larry Covin
Amanda and Jacob Sieger <i>First Wedding Anniversary</i> Barbara & Lee Bearmon	Diane (Cooky) & Russell Walzer <i>50th Wedding Anniversary</i> Wendy Fox & Jeff Barin Carole Davidson Patricia & Samuel Lichterman Jeanne & Steven Prawer Rollye & Chuck Rinkey		Linda & John Nides <i>Friendship</i> Stacey & David Spencer	Joni Hymanson Judy & Michael Emmons Marilyn Marker & Bud Shapiro
Paula & Michael Sieger <i>Wedding Anniversary</i> Barbara & Lee Bearmon	Helene & Hillard Ward <i>69th Wedding Anniversary</i> Scott Burstein		Joan Noun <i>Friendship</i> Adrienne Summerfield	Diane Korsh Stacey & David Spencer
Richard Simmons <i>Birthday</i> Linda & Miles Braufman	Eitan Weinstein <i>Graduation</i> Barbara & Zola Friedman		Barbie Ross Vicki Schraber	Betty Sue Lipschultz Linda & Miles Braufman
Mark Simon <i>70th Birthday</i> Robin & Nolan Segal Debbie & Tom Simon	Marilyn Weisberg <i>Special Birthday</i> Shelly Reichert Shirley & Larry Zipkin		Marta & Herbert Schechter Eileen & Harold Scherling	Sue Muscoplat Ann & Neil Covin
Sandy Sondell <i>Birthday</i> Ann & Neil Covin	Robert Werner <i>Retirement</i> Robin & Bryan Landy Sandra & David Marrinson		Eileen & Harold Scherling <i>Kindness And Friendship</i> Loni & Darrell Ansel	Alice Okrent Joey & Jerry Laurie
Sandy & Jason Sondell <i>20th Wedding Anniversary</i> Heather & Kevin Besikof Ann & Neil Covin	Anna Wert <i>High School Graduation</i> Millie & Howard Segal		Bonni Shapiro Eileen & Harold Scherling	Marcia Oleisky Loni & Darrell Ansel Susan Goldman
Shira Burton & Jonas Specktor <i>Birth of Ira</i> Amy & Lee Friedman	Etai Wert <i>High School Graduation</i> Millie & Howard Segal		Susan Chalfen & Dan Silvers Eileen & Harold Scherling	Jerome Seraf's Mother Anne Dachis
Bonnie & Arthur Stein <i>Birth of Grandsons Noah James & Asber Miles</i> Barbara & Zola Friedman	Susan & Rob White <i>Julie and Torin's Marriage</i> Diane & Louis Goldenberg Randi & Barry Wolfish		Judy & Buddy Tennebaum Cookie & Michael Goldman	Nancy Serber Marilyn & Richard Chern
Sue Steinberg <i>Scott's Marriage</i> Dana Rubin	Lynn Wolfe <i>Special Birthday</i> Charlotte & Richard Berman		Marjorie Belkin Donna Krietzman	Jackie Sinykin Harriett & Harvey Rochlin
Andrew Stillman <i>Birthday</i> Ricki Roberts & Mark Simon	Ania & Chuck Wyant <i>Birth of Granddaughter Sophia</i> Stacey & David Spencer		Joanne Blindman Delores Kelber	Rollye Winnig Patricia & Samuel Lichterman
Ari Stillman <i>Bar Mitzvah</i> Mimi Winger & Howard Shapiro	Shirley Zipkin <i>Special Birthday</i> Lynn & Bernard Abramson Loni & Darrell Ansel Myrna & Gary Bell Connie Berman Toby & Frank Berman		Stan Engman Marcia & Mark Cherniack	Anne Wolf Connie Berman Shelly Reichert Susan Chalfen & Dan Silvers
Noah Stillman <i>Graduation</i> Mimi Winger & Howard Shapiro			Bruce Fink Wendy Fox & Jeff Barin Gail & Bill Ribnick	Lynn Wolfe Charlotte & Richard Berman
Marsha Tankenoff <i>Special Birthday</i> Judy & Jon Harris			David Fink Lois & Walter Baum Rita & Larry Covin	Sydney Wolpert Heather & Kevin Besikof

*In Appreciation
of*

*A Speedy
Recovery To*

Thinking Of You

Linda & Tom Sklar
Judi Belzer & Jerry
Waldman

Robert Warshawsky
Mary & Bob Mersky

In Memory Of

We note the following 3 individuals who passed away between June 1 and Aug. 31, 2020. We thank their families for thoughtfully designating JFCS for their memorials. It is a beautiful tribute to those who passed and a fitting way to ensure their legacy will continue to enhance the lives of many others in the community. May their memories always be for a blessing.

Cindy Idelkope
Judy Lehrman
Faye R. Stillman

Sandra J. Abramson
Patti Baskin
Ann & Neil Covin
Lynn & Howard Goldman
Susan Goldman
Jacki Paster & Ron Krank
Gail & Bill Ribnick
Harriet Swatez
Diane & Russell Walzer

John Adams
Linda & Miles Braufman

Lorraine Astren
Sheldon Klugman
Sybil Rubin

Arthur Averbook
Peggy & Billy Cohn

Joachim Bass
Betty Kohn

Kent Batson
Barbara & Zola Friedman
Patricia Kenton &
Philip Politz

Tom Bennett's Mother
Barbara & Bob Weinstein

Bruce Besner
Joyce & David Rosenbaum

Bette Ann Bloom
Jane & Jonathan Gordon
Abbie Miller
Joyce & Martin Orbuch

Maureen Bloom
Patti Baskin
Judy Graceman
Joanie Levinsohn
Marilyn Marker &
Bud Shapiro
Noreen & Bernie Milstein
Harriet & Stephen Swartz
Shirley & Larry Zipkin

Pat Blumenthal
Barbara & Zola Friedman

Corinne Bogart
Charlotte & Richard
Berman

Cecelia Brown
Jane & Jonathan Gordon

Conrad Butwinick
Joyce & David Abramson
Caren Schweitzer &
Steve Baumwald
Barbara & Tom Carlstrom
Marcia & Mark Cherniak
Lesley & David Cohn
Peggy & Billy Cohn
Dee Dempsey
Susie & Bobby Diamond
Lisa & Douglas Epstein
Lenore & Al Feldman
Debbie & Michael Finn
Judie Goldetsky
Cindi & Harold Goldfine
Melanie & Vic Greenstein
Marilyn Horowitz
Linda & Scott Ketover
Maxine & Joe Kirshenbaum
Roberta & Howard Liszt
Mary & Bob Mersky
Louise & Bruce Moss
Myrna Pinto
Ellen & Earl Reinhardt
Nancy & Kevin Rhein
Rollye & Chuck Rinkey
Wendy & Steve Rubin
Kathi Balaban &
Phil Schneider
Bonnie Sell
Susan & Michael Shields
Susan Chalfen & Dan
Silvers
Linda & Tom Sklar
Vicki & Lloyd Stern
Susan & Barry Taran
Karen & Alan Winner
Lynn & Ron Zamansky

Mae Champion
Judy & Michael Emmons

Irv Cell
Denise & Marshall Hertz

William Chiat
Bob Edelstein
Delores Kelber
Harriett & Harvey Rochlin
Sybil Rubin
Dori & Herb Weisman

Randal Covin
Ann & Neil Covin
Rita & Larry Covin
Delores Kelber
Vicki Schrabber
Sandy & Jason Sondell
Stacey & David Spencer

Lester Crystal
Margie & Stuart Cohen
Barbara & Neal Frank
Arlene & Sidney Harris

Paula & Robert Maisel
Audrae & Jerry Rosenzweig

Dee Dempsey's Uncle
Shelly Reichert

Beverly Dolinsky
Bev & Bill Fishman
Betty & Jerry Gurewitz
Howard Held
Dorothy Herman
Lizbeth Stein & Rob
Larson

Judy Dworsky
Barbara & Zola Friedman
Diane & Louis Goldenberg

Arnold Familian
Shirley & Larry Zipkin

Dr. Alan Feen
Cooky & Arnold Strimling

Thomas Feinberg
Sandra Okinow

Myrna Feldman
Beverly & Jerry Finkelstein
Betty Kohn
Blanche Singer

Sally Fingerman
Sheila & Hy Paisner

Dr. Ronald Fragen
Toby & Frank Berman

Alvera Franceschi
Shirley & Mark Lerner
Amy & Tom Lieberman
Lois Liss
Nancy Liss
Saralee Mogilner
Lisa & Bruce Peilen
Eileen Winger
Mimi Winger &
Howard Shapiro

Jeremy Freeman
Amy & Lee Friedman

Dick Frost
Gail & Frank Berman

Eileen Garelick
Debbie & Alan Dubinsky
Stacey & David Spencer

Lorraine Garon
Alice Okrent &
Larry Wertheim

Harriet Gasway
Jean Efron
Harriet & Nathan Newman

Tom Gero
Sharon & Marvin Resnick

Doris Ginsberg
Anne Dachis

Mark Goldenberg
Mark Mandel

Peggy & Ray Gordon's Mother
Roz & Fred Kaplan

Michael Greengard
Rita & Larry Covin
Bernice & Percy Greenberg
Joanie Levinsohn
Joyce & Mike Shapiro

Jim Guerrero
Diane & Steven Arenson

Paul Hartman
Ardis & Fred Blumenthal

Bernice Hertz
Patti & Steve Soboroff

Louisa Hext's Mother Sylvia
Nancy & Kevin Rhein

Jay Hoffman
Joyce & David Abramson
Kerry & Scott Bader
Wendy Fox & Jeff Barin
Jenny & Jon Benowitz
Margo Berdass
Charlotte & Richard
Berman
Eleanor & Bernard Borkon
Fran & Marvin Burstein
Elayne & Larry Chiat
City of Golden Valley
Diane & Richard Cohen
Laura L. Cohen
Karen & Morris Davidman
Carole Davidson
Susie & Bobby Diamond
Cecilia & Steven Dobrin
Tanni Stone-Dorshow &
Loren Dorshow
Bob Edelstein
Libby & Andy Finn
Amy & Lee Friedman
Sue Garnett
Margie Wasserman &
Neal Gendler
Debra & Mitchell Gensler
Marni & Brent Gensler
Peni & Steven Gensler
Cindi & Harold Goldfine
Jane & Jonathan Gordon
Jerry Greenstein
David J. Harris
Evie & Alan Ingber
Jan Saffron-Johnson &
Tom Johnson
Shari Kaufman
Melissa & David Kieffer
Janie & Orrin Kirschbaum
Devorah & Jeffrey Koval
Lorrie Labofsky
Joey & Jerry Laurie
Joyce Levenson
Susie & Bob Lewis
Paula & Robert Maisel
Sandy & Howard Marker
Gail & Edward Osterman
Lisa & Bruce Peilen
Susan & Richard Proman
Jill & Jeff Rabinovitz
Rollye & Chuck Rinkey
Gerald Roberts
Marc Roberts
Amanda Rubin
Barry Rubin

Brad Schneider
Cari & Jeff Shaw
Mika & Jacob Simms
Nancy Solomon
Hindy & Scott Tankenoff
Judi Belzer & Jerry
Waldman
Suzanne & Everett
Weinstein
Arlene & Stephen Winnick
Marilyn Bix & Nate Wolk
Ellie & Mark Wolpert
Dawn & Danny Zouber

Bonnie Holland
Terry & Richard Kleinbaum

Fred Hyman
Karen & Morris Davidman

Karyn Hyman
Karen & Morris Davidman

Cindy Idelkope
Joanne Rogin-Abrams &
Ronald Abrams
Carolyn Abramson
Jan Apple
Terry & Jack Appleman
Gail Asher
Kerry & Scott Bader
Amy & Stan Baratz
Ann Bellows
Rebecca Biderman &
David Fraher
Karen & Ivan Brodsky
Cathy & Richard Broms
Sheila & Tim Burke
Heather Charles
Marcia & Mark Cherniack
Chestnut Cambronne PA
Kitty & Lee Christiansen
Leslie Held & Jim Chucker
Jocelyn, Jeff, and Isla
(Lebow) Chuy
Laura L. Cohen
Carol & Bernard Colby
Ann & Neil Covin
Elaine & Gary Dachis
Donna Dahl
Kari Dahlin
Gertrude Epstein
David Feinberg
Rebecca Fine
Sylvia & Robert Fine
Libby & Andy Finn
Janet Flam
Stacy & Jonathan Gallop
Robbie Perl & Rick Garon
Maggie Gilbert
Marlene Gimpel
Rochelle Gittleman
Jean Freeman &
Bruce Golob
Nancy & Stephen Gordon
Steven Graybow
Suellen & Barry Greller
Susan & Peter Gross
Molly Grossman
Joanne & Bruce Gruen
Linda Gustafson
Peggy Halpern
Roberta Hoffman
Ann House

Cindy Idelkope (Cont.)

Wendy Friede & Jay Jaffee
Jan Saffron-Johnson &
Tom Johnson

Marion & Steven Kahn
Margaret & Dave Knutson
Susan & Hart Kuller
Robin & Bryan Landy
Gert & Rick Lappin
Jan & Dr. John Larsen
Laurel Wealth Planning
Shirley & Mark Lerner
Gina & Robert Levine
Al & Mary Beth Liekhuis
Jule Manuel
Jill Ann Marks
Cindy & Jack Mayeron
Linda Passon-McNally &
Bernie McNally

Clare Millheiser
Minneapolis Clinic of
Neurology
Kyle Murray
Jane & Marc Nathanson
Marcia & Allen Oleisky
Abigail Overby
Sotirios Parashos
Lisa & Bruce Peilen
Renee & Michael Popkin
Carherine & Matt
Ransweiler

Allison Richards
Marilyn & Jeff Rivkin
Robert Rockler
Dory Rose
Marcia Rosen
Josie & Rod Rothstein
Bonnie & John Rowell
Harolyn Rudoy
Megan Lebow Sambolt
David Santella
Gail Bender-Satz &
Mark Satz

Nancy & Steve Schachtman
Sybil & Paul Silverstein
Ricki Roberts &
Mark Simon

Margaret Spiegel
Elizabeth & Eric Stahl
Carol & Gerry Steinman
Tom Swain

Harriet Swatez
Laurie & Greg Swiler
Susan & Barry Taran
Adele Della Torre
Judi Belzer & Jerry
Waldman

Mari Waterous
Susan Gray & Paul Waytz
Alice Okrent &
Larry Wertheim
Matthew Wiesenfeld
Michael Zimmerman
Muriel & Felix Zwiebel

Mildred Ingber

Marilyn & Richard Chern
Lauren Rinkey
Marilyn Bix & Nate Wolk
Dawn & Danny Zouber

Sherm Kaminsky

Carole Davidson

Robert Kaner

Perri & Steven Levitus
Geri Serber Sweet & Jeff
Sweet

Cookie Karsh

Nancy & Stephen Gordon
Ellen & Earl Reinhardt

Melvin Kastskee

Sharon Kivens

Esther Kaufman

Susan & Richard Gabriel
Elizabeth & Preston
McMillan
Nancy Miller
Blanche Singer

Sylvia "Chickie" Kavitt

Sandra & David Marrinson

Stephen Krupp

Ardis & Fred Blumenthal
Mitzi & Terry Kane
Paula & Robert Maisel
Suzi Nathanson

Paul Kunin

Linda & Miles Braufman
Barbara Cohn
Mitzi Diamond
Diane & Louis Goldenberg
Bruce Goodman
Jane & Norman Gurstel
Gloria Jaffe
Lisa & Bruce Peilen
Linda & Max Rutman
Roz & David Schwartzman
Sandra Wallack
Shirley & Larry Zipkin

**Helene Landsman's
Husband**

Stacey & David Spencer

Eva Launer

Cynthia Launer &
Will Thomas

Judy Lehrman

Diane & Steven Arenson
Marcie & Dennis Ashenfarb
Michael Finkelstein
Paula & Michael Flom
BJ & Simon Goldman
Ernest Grumbles
Judy & Andy Halper
Mimi & Steve Klane
Barbara S. Levie
Amy & Tom Lieberman
Carrie & Joseph Lifland
Sheryl Sue & Steve Warren

Donald Lerner

Gerald Roberts
Marc Roberts

Jerry Leshgold

Sheila & Hy Paisner

Elliot Levin

Diane & Louis Goldenberg

Carl Levine

Anne & Allen Wolf

Gabe Levinson

Linda & Miles Braufman

Carrie Lifland's Father

Sally Forbes Friedman

**Mr. & Mrs. David Lisberg's
Sister Diane**

Cooky & Arnold Strimling

Dr. Harold Londer

Judie Goldetsky

Delores Lustig

Carol & Gerry Steinman

Shelley Mandelcorn's**Mother**

Gail & Bill Ribnick

**Meagan Margolis'
Grandmother**

Beverly & Jerry Finkelstein

Charles Marks

Tanni Stone-Dorshow &
Loren Dorshow
Debbie & Alan Dubinsky
Beverly & Jerry Finkelstein
Margie Wasserman &
Neal Gendler
Simie & Al Kaye
Rita & Ron Kelner
Gloria Murman
Lisa & Bruce Peilen
Barbara Masler &
David Perlman
Patricia Kenton &
Philip Politz
Sandy Teichner

Ed and Roz Marks

Audrae & Jerry Rosenzweig

Naomi Maul

Anne Dachis
Amy & Lee Friedman
Gail & Bill Ribnick
Cheri & Michael Sudit

Morris Miller

Judy & Larry Kaplan

James Miller's Parents

Sheldon Klugman

Sam Mislow

Suzi Nathanson

Matt Mogol

Linda & Miles Braufman
Marcia & Mark Cherniack
Mitzi Diamond
Mary & Bob Mersky
Harriet Swatez
Barbara & Bob Weinstine

Larry Moldo

Barbara Harris

Richard Mullenbach

Alice & Larry Greenbaum

Diane Munder

Sybil Rubin

Mark Orloff

Miriam & Robert
Kleinbaum

Sheldon Rabinowitz

Judy & Andy Halper

Sam Rafowitz

Esther Begam
Cindi & Harold Goldfine
Howard Held
Nancy & Jack Held
Roz & Fred Kaplan
Eileen & David Kohn
Faye Segal
Judi Belzer & Jerry
Waldman

Louis Reiter's Sister Sheila

Marilyn Swatez

Bill Ritzen

Fran & Marvin Burstein
Karen & Morris Davidman
Carole Davidson
Susan & Richard Goldman
Rita & Ron Kelner
Patricia & Samuel
Lichterman

Larry Ross

Connie Berman
Toby & Frank Berman
Linda & Tom Sklar

Ilse Rozman

Marni & Gal Noyman

Mindy Salper's Uncle

Barbara Harris

**Don & Pat Sandler's
Daughter**

Linda & Max Rutman

Georganne Savitt

Alvin Apple &
Elaine German
Barbara & Lee Bearmon
Rena & Lu Daitzchman
Debbie & Alan Dubinsky
Margie & Michael Earhart
Diane & Louis Goldenberg
Adeline Gould
Susan & Peter Gross
Judy & Andy Halper
Howard Held
Sheila Kantar
Fay & Mitchell Kaye
Jill Kivo
Deb & Jeff Kohen
Toby & Manny Kohen
Eileen & David Kohn
Tova & Mike Koren
Joey & Jerry Laurie
Karee & Brad Lehrman
Susanna & Tim Lodge
Nancy & Kevin Rhein
Robin & Nolan Segal
Stacey & David Spencer
Alaine & Howard Wilensky

John Schalit

Joyce Moscoe

Barb Schoonover's Father

Stacey & David Spencer

Mark Schrabar

Vicki Schrabar

Lois Seltzer

Gloria Murman

Stan Shuster

Paula & Robert Maisel
Mary & Bob Mersky
Andrea & David Ornstein
Jeanne & Steven Prawer
Suzy Shanedling
Harriet Swatez

Dianne Siegel

Carole Davidson
Amy & Lee Friedman
Barbara & Zola Friedman
Cindi & Harold Goldfine
Marilyn & Ralph Shapiro

Jackie Sinykin

Patti Baskin

Henry Snyder

Lois & Walter Baum
Audrae & Jerry Rosenzweig

Faye R. Stillman

Amy & Stan Baratz
Wendy Fox & Jeff Barin
Marilyn & Tim Broms
Barbara Cohn
Jennifer & Richard Ezrilov

Amy & Lee Friedman

Rhonda Stein &
Stuart Goldenberg

Judy & Andy Halper

Harmony & Joel Kaplan

Robin & Bryan Landy

Katie Lewis

Amy & Tom Lieberman

Marsha McDonald

Minneapolis Jewish
Federation

Minneapolis Portfolio
Management Group

Joyce & Martin Orbuch

Shelly Reichert

Nancy & Kevin Rhein

Bettimae Richman

Dana Rubin

Polly & Michael Saxon

Ricki Roberts &
Mark Simon

Jamie Smith

Carol & Gerry Steinman

Barbara Stillman

Hindy & Scott Tankenoff

Marsha & Gary Tankenoff

Judi Belzer & Jerry
Waldman

Bruce Walonick

Shirley & Larry Zipkin

Shirley Swerdlick

Blanche Singer

Laura Tanz

Roberta & Fred Kravitz

Laura Nezworski

Fran & Jeff Toubin

Miriam Ungar

Melanie & Vic Greenstein

Mark Vertelney's Sister

Diane & Russell Walzer

Florence Warner
Arlene & Sidney Harris
Mark Mandel

**Steve & Pat Warner's
Father**
Joyce & Robert Liebo

Nina Wernick
Paula & Arvin Cohen
Barbara & Neal Frank
Lisa & Bruce Peilen
Kathi Balaban & Phil
Schneider
Joan & Paul Wernick

Robert Windsor
Jill & Larry Field

Donna Lee Zwick
Susan & Richard Proman

KADIMA

BUILDING OUR FUTURE

Kadima: Building Our Future is the first campaign of its kind—an emergency campaign with staying power. Coordinated by Minneapolis Jewish Federation and benefiting every corner of the community, Kadima focuses on two major needs:

- *Provide for community-wide, collaborative COVID-19 recovery planning and implementation*
- *Enhance community security in Minnesota and the Dakotas*

Kadima funds extraordinary needs—needs beyond the day-to-day work of each organization. Only by meeting those needs can our community organizations continue to serve their communities and do the work that makes our collective Minneapolis Jewish community a safe, inclusive home.

www.kadimampls.org



JFCS Endowment Funds

Providing support annually and for the future

Bill and Bailee Aberman Family Fund for the hearing impaired and for use as needed for client services

David and Joyce Abramson Family Camp Scholarship Fund for children and youth who, without such scholarships, would be unlikely to have a camp experience

¹Anonymous Fund to support the Twin Cities Jewish Healing Program

Anonymous Fund to help improve the quality of life for the elderly who struggle with mental illness

Bob and Sharon Ansel Fund to support services for senior citizens

Darrell and Loni Ansel Family Fund to support programs and services for children

Donna and Alvin Apple Family Fund for use where most needed

Lorraine and Sidney Applebaum Family Fund for use where most needed

Birdie L. Appleman Fund to support programs and services to individuals with developmental disabilities

Molly and Sid Bader Family Fund for children with special needs

Anita and Ben Badiner Family Fund for use where most needed

Bernard and Fern Badzin Fund for use where most needed

Barry K. Baines, M.D. Twin Cities Jewish Healing Program Fund to support the Twin Cities Jewish Healing Program

Margie and Michael Baker Fund to provide scholarships for guidance counseling

Ronald S. Bannack Memorial Fund for food security for ACT Program participants

²Wendy Fox and Jeff Barin Fund for use where most needed

Barbush/Bartram Fund for use where most needed

Marilyn and Larry Barenbaum Family Fund for older adults and children

Alex, Ben and Jacob Barry Children's Fund for services to children

Michael and Etta Barry Family Fund for use where most needed

Bass/Weinblatt Family Fund to support family programming

Irving and Deane Bassin Senior Assistance Fund to support programs and services for older adults

Ralph and Charlotte Bearman Family Fund to support services for older adults and for vocational programs

Barbara D. and Lee Bearmon Fund to support programs and services to children with special needs

Belzer Family Fund for children and older adults

Jane and Steve Benowitz Fund for assistance with medical and dental needs

Fred and Margo Berdass Family Fund to support services to those in need

Charlotte and Richard Berman Family Fund for use where most needed

Joanne Ferraro and Robert Beugen Fund to provide cultural scholarships to encourage young people with special interests

Sheri and Les Biller Family Fund for émigré educational scholarships and general programming

Birger/Goldenberg Family Fund to support Jewish Camp Scholarships

Linda and Miles Braufman Family Fund to support older adult services to include assisted transportation, respite care or where most needed

Ghita Davis Brody "Dare to Dream" Healing Get-Away Fund to help children who are ill, and their families, with recreational and cultural needs

Broms Family Fund for use where most needed

¹Elaine Budd Special Family Life Education Fund

Caring for Our Children Fund to support programs and services to children with autism spectrum disorders and other disabilities

Chalfen Family Fund for use where most needed

Sarah and Ida Chapman Camp Scholarship Fund

Stuart A. Chazin Young Adult Outreach Fund

Arvin Cohen Hustle Athletic Fund to support children and youth to participate in athletic activities

Joe and Fredell Cohen Family Fund for use where most needed

Laura Leiderman Cohen Fund to support the Twin Cities Jewish Healing Program and programs for people with disabilities

Edythe and Haskell Cohodes Special Needs Inclusion Fund to provide staff and resources to children with special needs

Judy and Rod Cooperman Family Fund for use where most needed

Stan Cowle Memorial Fund to support programs and services for older adults

Leo and Yetta Cram Maintenance Minyan Fund to provide household maintenance services to older adults and people with disabilities

Dachis Family Fund for services to children or where most needed

Davidman Family Fund to support education and children's needs

Jesse Davidson Fund to support services related to substance abuse

Stephen J. Davidson Technology Fund to support technology used to support the services JFCS provides

Ruth Davis Fund to support athletic opportunities for youth

Deikel Family Fund for Mental Health Support Services (MHSS) and the ACT Program

Mike and Mitzi Diamond Family Fund for use where most needed

Robert and Susan Diamond Emergency Financial Assistance Fund

Allie and Mark Divine NextGen Fund

Rita and Harold Divine Fund for use where most needed

Domestic Abuse Fund to provide prevention education and training

Domestic Violence Support and Prevention Fund to support victims of domestic violence

Caron H. Dubinsky Fund to provide assistance to single parents and financially-challenged families with school-related costs for Jewish education

Elliott S. Dubinsky Fund to support the ACT Program

Lillian Dubinsky-Wishnick-Muscovitz/Muriel Dubinsky Fund to assist with educational costs for youth with disabilities

Doris and Mischa Dworsky Fund for emergency financial assistance

Peretz Dworsky Fund for use where most needed

AnnRita Edelberg Fund to assist clients who are hearing impaired

Michael Engel Memorial Fund for use where most needed

Michael Engler Children's Fund to support programs and services for children

Mark and Carol Epstein Family Fund to provide support to children with special needs

Richard and Jennifer Ezrilov Family Fund for use where most needed

Vivian and Bob Ezrilov Fund to support services to children

Corrine and Tom Feinberg Fund to support programs related to Jewish education for children

David E. Feinberg Family Fund for use where most needed

Francine and Neil Feinberg Healing Fund

Joan and Arnold Feinberg Fund for use where most needed

Feinstein/Dworsky/Molever Fund to support JFCS Senior Services and Counseling

¹Harry Feinstein Memorial Fund to meet the needs of Russian Jewish immigrant children

Aaron Feuer Fund to provide mental health services for adolescents and young adults

Ida Finne and Janice Kwiat Fund for services to the elderly

Gerda and Haskel Fishman Fund to support senior services or camp scholarships

Mike and Linda Fiterman Youth Experience Fund to provide youth with special opportunities

Robert and Virginia Forbush Fund for use where most needed

²Frank Family Perpetual GIVE Fund to support programs and services

Barbara and Neal Frank Fund for use where most needed

Bruce Frank Fund for use where most needed

Jerry and Sharie Frank Family Fund for mental health services

Libby and Ben Frank Fund to support programs and services for individuals with special needs, with a focus on children

Shirley and Byron Frank Family Fund for JFCS Senior Services

Nancy and Stuart Friedell Family Fund for use where most needed

Renee, Jim and Joan Gainsley Family Fund for use where most needed

Gale, Herman, Segal Fund for use where most needed

¹Markus and Sabina Gapany Prescription Drug Fund for the elderly to help with the cost of prescription drugs

Ida and Bernard Gingold Fund for use where most needed

Roy Ginsburg Fund to support JFCS Senior Services

Greg, Tom, and Elliot Glaser-Leder Fund for expenses associated with adoption and child welfare

David and Dorothy Glickson Senior Transportation Fund to support transportation services for older adults

Leah Golberstein Family Fund for the Twin Cities Jewish Healing Program

Gold Family Children's Fund to provide services to children

Richard H. Goldblatt Healing Fund for use where most needed

¹Barbara and Steve Goldfarb Designated Fund to benefit the Jewish Youth Mentoring Program

Cindi and Harold Goldfine Fund to support the JFCS Annual Benefit Dessert Reception

Sylvia and Arnold Goldman Fund for use where most needed

Lois and Stanley Goodman Family Fund for services to children and young adults, and to support hospice services and programs

Bernice Cowl Gordon Mitzvah Fund for use where most needed

Gary A. Gordon Family Fund for children with special needs

Guita Bearman Gordon Scholarship Fund for women in rabbinical or cantorial studies

Sewell Gordon Scholarship Fund to support educational expenses based on need and merit

Jacob and Golda Gottlieb Twin Cities Free Loan Fund to support the Jewish Free Loan Program in the Twin Cities area

Adeline and Mel Gould Family Fund for use where most needed

Arlis and Erwin Grossman Family Fund for use where most needed

Kopple and Anita Hallock Family Fund to provide services for children in foster care, residential placement and other impermanent living situations

Judy and Andy Halper Family Fund for use where most needed

Halpern Green Family Fund for use where most needed

Sid Hartman Fund to support the Jewish Youth Mentoring Program

Louis & Bessie Heck, Harold & Marion Kaplan and Eugene Heck Memorial Fund for use where most needed

Elissa Heilicher Family Fund for Healthy Family Relationships to support programs and services to combat Jewish domestic abuse

Avron (Ron) C. Heiligman Healing Fund to support activities of the Twin Cities Jewish Healing Program

Jory M. Herman Family Summer Youth Experience Fund to assist youth to attend summer camp or have an Israel experience

¹Agnes Berenberg Hoffman Tribute Fund for emergency financial assistance to older adults

Holocaust Survivors Fund for special programs and services for survivors

Sam and Frances Hymanson Scholarship Fund for college scholarships

Mark (Pesach) Jaffe Fund to support services and programs of the Twin Cities Jewish Healing Program

JFCS Bequest Fund for use where most needed

Marvin A. Jolson Fund to support individuals with Parkinson's Disease and their families

Al, Stan and Jeanne Kagin Family Fund for use where most needed

Orlee and Jeffrey Kahn Family Fund for use where most needed

Janice and Steven Kalin Family Fund for use where most needed

Joe and Estelle Kane Family Fund to support JFCS Senior Services

Doug and Cindy Kanter Family Endowment Fund for use where most needed

Carole and Marty Kaplan Family Fund for use where most needed

Esther and Reuben Kaplan Fund for educational expenses for single mothers and their children

Bob and Stefanie Karon Fund to support mental health services for adolescents

Maynard Katz Tennis Scholarship Fund to support junior tennis scholarships for young athletes in need of financial assistance

Alvin and Audrey Kaufman Fund for use where most needed

Delores and Robert Kelber Fund for use where most needed

¹Margaret Kelen Emergency Aid to the Elderly Fund

Sharon and Marty Kieffer Family Fund to provide mental health services and support for children and adults with disabilities

Eva and Sheldon Kieffer Campership Fund

¹Jaeson and Marjorie Kline Tribute Fund for emergency financial assistance to older adults

Deborah and Gary Kohler Family Fund for use where most needed

Julie and Marc Kozberg Fund to support services to seniors

Grace and Marvin Kramer Fund to provide emergency financial assistance to families with minor children

Nettie and Ben Kramer Family Fund for emergency financial assistance

Kramer/Saxl Family Fund for use where most needed

Faye and Mayer Krupp Family Fund for adults with developmental disabilities

Lonia and Leon Kuperman Fund for use where most needed

Jeanette and Max Kurnow Family Fund to provide food, shelter and emergency assistance to people in need

Teresa and Robert Laing Family Fund to provide medical and dental care for children and older adults

Cliff and Susan Lake Family Fund to support services for children

Robin and Bryan Landy Family Fund to support volunteer work at JFCS

Jerry Lavin Memorial Fund to support services and programs to children, with priority to those with special needs

Sam and Betty Lavine Family Fund for use where most needed

Russell F. Lederman Jewish Youth Mentoring Program Fund

Angela and Jack Leibman Family Fund for use where most needed

Levenson/Spanier Family Fund to provide mental health support services

Robert and Sally Leventhal Family Fund for use where most needed

Margie and Leo Levie and Family Fund to provide respite care for those who are caregivers for a frail older adult, ill spouse or sick child

Carol and Jerry Levin Family Fund for the Jewish Youth Mentoring Program and for services to older adults

¹Jeanne and Albert Levin Family Fund to provide emergency aid to the elderly

George and Marion Levine Fund for use where most needed

Joan and Robert H. Levine Family Fund for services to children with learning and other disabilities

Sid and Joanie Levinsohn Family Fund for scholarships for higher education

Lucky and Leonard (Butch) Levy Memorial Fund to support recovery and addiction services

Lichtblau Family Fund to provide support to caregivers

Ben and Ruth Liman Family Fund for use where most needed

Lois and Hy Liss Family Fund to provide services to Parkinson's patients and their families, and to support programs and services to older adults

²The Jeffrey Locketz Memorial Endowment Fund for Kosher Meals on Wheels and Senior Services programs

Francelyne and Richard Lurie Family Spirit of JFCS Fund for use where most needed

Marian Maisel Mental Health and Healing Fund

Malakoff Family Fund for use where most needed

The Mark & Roberta Mandel Family Food Security Fund so no one will ever be hungry

Hymie and Doris Margolis Fund for special experiences for children

Alyssa and Jon Marker Fund for use where most needed

Jacob, Max and Sam Mars Fund to assist children and youth with physical or emotional disabilities

Metropolitan Mt. Sinai Fund for medical prescriptions and transportation to medical appointments

Alvin and Mildred Miller Fund for use where most needed

Ben Miller Foundation Fund to support JFCS Senior Services

Beryl and Florence Miller Family Fund to support JFCS Senior Services

Mogilevsky Family Fund for use where most needed

John Morgan Fund for use where most needed

¹Joyce and Donald Moscoe Family Emergency Fund

Jeffrey and Gloria Murman Family Fund for use where most needed

Charles and Candice Nadler Family Fund to support the Jewish Youth Mentoring Program

Edith and George E. Nadler Fund to provide special services for seniors

Nager Greenberg Fund for educational scholarships for Jewish students based on need

Corky and Bob Neuman Fund for services to children

Harriet and Nathan Newman Family Fund to provide holiday assistance for Jewish older adults

Louis Newman and Rabbi Amy Eilberg Fund to support the Twin Cities Jewish Healing Program

Irv Nudell Special Projects Fund for use where most needed

Jean Nudell Fund to provide financial assistance and special opportunities for single mothers and children

Alice Okrent Hag Sameach Fund to provide holiday toys, items and other goods for families in need

Okrent Wertheim Family Fund to support mental health services

Allen and Marcia Oleisky Fund to support transportation and other services for Mental Health Support Services clients

Robert E. Oleisky Fund for young adult outreach and Mental Health Support Services

Abe Olkon Fund to support respite care

Orbuch/Grayson Family Fund to support competitive workforce training

Parish Family Fund for use where most needed

Patients Assistance Fund to financially assist with medical services

Alvin and June Perlman Fund to support programs and services for older adults

Richard and Sara Pieser Children's Fund to support programs and services for children

Scott I. Pink Fund for services to people with chronic mental illness

²Marcia and Aaron Pinkus Fund to support inclusion for adults and children with disabilities

Sharon Plotnick Memorial Fund to support JFCS Senior Services

Margot and Jeno Por Helping Hand Fund to provide non-interest loans or grants, with priority given to single parents and new Americans

Alina and Alexander Portnoy Fund for use where most needed

Steve and Jeanne Prawer Family Fund to support Jewish children and their families by offering positive Jewish role models to children who can benefit from the relationship

Tybie Proman Fund for young adult programs and for services to adults with developmental disabilities

Rafowitz Family Fund to support services related to substance abuse

²The Amy Susan Raskin Mental Wellness Fund to support mental health counseling

Ilana Fay Ratner Fund to provide training and education, emergency financial assistance, and support and advocacy for children with special needs and their families

Sylvia and David Ratner Memorial Fund for JFCS special needs and inclusion programs

Rachel Raviv Hoffer Fund to support the Jewish Youth Mentoring Program

Andrew and Lynne Redleaf Fund for programs and services to children

Michael and Arlene Reich Fund for kids to experience summer camp

Marvin and Sharon Resnick Family Fund to provide dental services to those in need and transportation services to older adults

Nancy and Kevin Rhein Family Fund for use where most needed

Rollye and Chuck Rinkey Fund for use where most needed

Robbins Family Fund for use where most needed

Roberts Family Fund for emergency financial assistance

Robin Family University Merit Scholarship Fund for educational expenses, based on merit and need

Robins Family Fund to support older adult services

Robinson-Marks Mental Health Fund to support mental health programs and projects

Norton and Bert Rockler Family Fund for vocational programs and for use where most needed

Roitenberg Family Fund for use where most needed

Rolnick Family Fund for use where most needed

Phyllis and Justin Rosenblatt Fund for services to children

Ricky Rosoff Memorial Fund to support the Jewish Youth Mentoring Program

Marie L. Rothschild Fund for use where most needed

Karen Rubin Hag Sameach Fund to provide holiday toys, items and other goods for families in need

Lisa and Ben Rubin Family Youth Experience Fund to support the Jewish Youth Mentoring Program

Dr. Manly and Sybil Rubin Family Fund to support the care or shelter of abused children or children in need

William and Jacquie Rudelius Scholarship Fund to provide scholarships to undergraduates in Minnesota State Schools

Max and Linda Rutman Family Fund for use where most needed

Sabes Family Foundation Fund for use where most needed

Sally Salloway Memorial Fund for emergency financial needs of individuals

Saloshin Fund for special services for older adults and émigrés

Connell and Dorothy Saltzman Fund for older adults and children with special needs

Stephen and Suzanne Saltzman Fund to support Alzheimer's and ALS respite care

Helen and Michael Sandler Fund to support programs and services in healing and hospice

Clara and Leonard Savitt Family Fund for use where most needed

Sborov Family Fund for services to émigrés from the former Soviet Union and for use where most needed

Albert Schneider Memorial Fund to support services for older adults and appropriate workshops or lectures

Schochet Family Fund for emergency financial assistance

Anita B. Schwartz Fund to support emergency financial assistance to the elderly

Linda and Ivan Schwartzman Fund for use where most needed

¹Roz and David Schwartzman Fund for use where most needed

¹Martin and Gloria Segal Fund for services to adults with chronic mental illness

Millie and Howard Segal Acts of Kindness Fund for use where most needed

²Joyce and Stanley Segelbaum Fund for Jewish recovery to support JFCS Addiction and Recovery Services

Serber Family Fund to support services for children with disabilities

Dick and Rossy Shaller Mentoring Fund to provide adult mentors for children at risk

Leonard and Zetta Shapiro Discretionary Fund for use where most needed

Sam and Lorraine Shark Family Emergency Fund for emergency financial assistance

Carl and Rose Jean Sharpe Family Camp Scholarship Fund for children and youth who, without such scholarships, would be unlikely to have a camping experience

Sidney Shields Simcha Fund to support social and cultural outings for older adults and individuals with disabilities

Monroe J. and Charlotte K. Shine Family Fund for use where most needed

Beverly Siegel Fund to support the Twin Cities Jewish Healing Program

Molly and Alexander Silver Family Fund for use where most needed

Bobby Silverman Memorial Fund for children who are at risk

Loreen and Perry Silverman Fund for use where most needed

Shirley and Frances Snyder Memorial Fund for use where most needed

Evlyn Solomon Fund to support the Jewish Free Loan Program

¹Harold and Fleurette Spear Fund for Jewish camping experiences and other enriching experiences for children

²Jeanette and Allen Spencer Family Fund to support the Jewish Inclusion Fund for People with Disabilities

Mark Jon Starr Fund to support services and programs of the Twin Cities Jewish Healing Program

Rhonda Stein and Stuart Goldenberg Family Fund for use where most needed

Samantha, Ari and Dori Stein Tikkun Olam Fund to support children's services and where most needed

Marvin and Chelle Stillman Fund to support the Twin Cities Jewish Healing Program

Stillman Family Foundation Fund for children's programs and services

Marcia and Larry Swartz Fund to support families in need of emergency financial assistance

Susie and Stuart Swartz Family Fund to support services for children with special needs

Dr. Ian Swatez Medical Scholarship Fund to support deserving medical students based on merit and need

Gary and Marsha, Scott and Hindy Tankenoff Families Fund to support hunger relief and hunger support programs

James Tankenoff Family Fund to support programs and services for children

Elizabeth and Mayer Tapper Educational Fund to support career services for individuals with barriers to employment

Sidney and Roslyn Tarshish Family Fund for Jewish educational, camping and travel experiences for children and young adults, and for Jewish individuals to pursue higher education

Taswell-Moscowitz Family Fund for use where most needed

Twin Cities Gay/Lesbian/Bisexual/Transgender Program Fund for the Jewish community

Twin Cities Jewish Healing Program Fund

Twin Cities Mitzvahs Fund to support the Jewish Youth Mentoring Program

Ruth Usem Family Fund to provide services where most needed

Dr. Gary Velick Memorial Fund to provide assistance with medical prescriptions and other medical needs

Jerry Waldman Fund to provide special experiences for children and youth, and professional enrichment for Jewish communal workers

Harry and Jeanette Weinberg Fund for services to low-income individuals and families

Weiner Family Fund for innovative projects or for use where most needed

Paul A. Weingarden Law School Scholarship Fund for Jewish persons enrolled in or accepted to an accredited American law school

Bob and Barbara Weinstine Fund to support people with learning disabilities

Dr. Martin and Marilyn Weisberg Family Fund to support JFCS Senior Services

Siegfried Weiser Memorial Fund to support services for older adults and émigrés

Dori and Herb Weisman Family Fund for staff self-care training

Steven and Debra Weiss Family Fund to support JFCS Senior Services

Shale and Joan Wilensky Fund to support people with employment issues

Sybil and Seymour Wilensky Family Fund for use where most needed

Norman and Sally Winer Fund to provide emergency financial assistance to low-income older adults and youth

Wiss Family Fund to provide assistance to single parents and their families

Sheldon and Judy Witebsky Family Fund for use where most needed

Anne and Allen Wolf and Stephan Wolf Memorial Fund to support the Jewish Youth Mentoring Program

Wolfish Family Fund for use where most needed

Fremajane and Blair Wolfson Fund for Emergency Food Assistance

Leo and Helen Wolk Fund for use where most needed

Yesnes/Finkelstein Family Fund to benefit the ACT Program and children with special needs

Young Women's Fund to provide financial assistance to women to further their personal growth, education, recreation, fun, familial obligations and other

wants and needs. The fund was created by Marshall Silberstein in memory of his wife, Debbie, an outstanding social worker, college instructor and friend to many.

Zack Family Fund for use where most needed

David C. Zalk Fund for children and youth

Shirley and Larry Zipkin Transportation Fund

Zouber Family Fund for use where most needed

Named Funds for Immediate Use

Eric and Sally Bressler Family Fund to support the Jewish Free Loan Program

Herbert A. Chernoff Fund to support eye care for children and adults

Kelner-Witebsky Memory Care Fund to provide family consultations & education for caregivers

MORE for NOW Fund for mortgage or rent emergency assistance

Jon and Diane Rappaport Family Fund for use where most needed

Waller Family Fund to support Older Adult Services and the Jewish Youth Mentoring Program

1-Endowment funds designated to JFCS through the Jewish Community Foundation

2-New Endowment funds established since Aug. 1, 2020

This list includes funds established through Oct.. 15, 2020.

PJ Library Minneapolis is excited to announce the hiring of three Parent Connectors

Parent Connectors are engaging with parents of children ages 0-3 this year

The three positions are funded by a PJ Library Implementing Partner Engagement Grant from the Harold Grinspoon Foundation to expand and deepen engagement opportunities for families raising Jewish children. This is the second year JFCS received this grant.

“We’re so excited to be expanding this unique opportunity to connect families with young children in the Jewish community,” said Carrie Fink, PJ Library Program Coordinator. “The pandemic has caused families and parents to feel isolated and alone. The Parent Connectors are building relationships through virtual parent chats, story times, and outdoor physically-distant gatherings. Programs are being offered on both weekdays and weekends to accommodate parent schedules.”

The three PJ Parent Connectors are Lauren Schefman, Terri Lindenbaum, and Haley Lerner.

welcome

Lauren Schefman

Lauren Schefman is returning for a second year as a Parent Connector. She is a kindergarten teacher turned stay-at-home mom to almost 2-year-old Talya. She has loved spending these early years of motherhood finding fun baby and toddler friendly activities around town and meeting lots of new friends with young children. Lauren, her husband, Michael, Talya and pup Gemma live in Plymouth.

Terri Lindenbaum

Terri and her husband, Elan, moved to Minneapolis in 2015 from Madison. She worked at the University of Minnesota as a landscape designer, then as a Gopher assistant rowing coach, and is now full-time at home with their son, Noah (16 months), and soon-to-be sibling come November. Terri’s path to Judaism came later in life, and she is excited to share the joys of Jewish life with families of all backgrounds raising Jewish children. Terri and her family live in south Minneapolis, where you can find them running or biking the many beautiful trails in the city.

Haley Lerner

Brand new mama to her 3-month-old daughter, Eliza, Haley is thrilled to be one of the Parent Connectors this year! Originally from Milwaukee, Haley has

called Minneapolis home for the past 10 years. She, her husband, Oliver, and Eliza live in Golden Valley. Before her most recent promotion to mom, Haley worked as an educator in the non-profit sector and an event planner in the corporate world. In between all of that, she also kneaded and braided dough day in and day out for her home bakery, Challot by Haley. Haley loves throwing Shabbat dinners for her friends and family, cabin weekends in the north woods and long walks with Eliza through her neighborhood parks.

Lauren, Terri, and Haley have been reaching out to families with little ones ages 0-3 to start building connections and hearing from parents what their needs are. They are looking forward to spending time with you!

PJ Library Minneapolis is a program of Jewish Family and Children’s Service of Minneapolis’ (JFCS). It is an international award-winning program designed to strengthen Jewish identity by sending Jewish-content books and music on a monthly basis to children from age 6 months through 8 years. PJ Library also hosts regular community events for families. Shalom Baby welcomes families of newborns and babies, up to age 2, to the Jewish community.

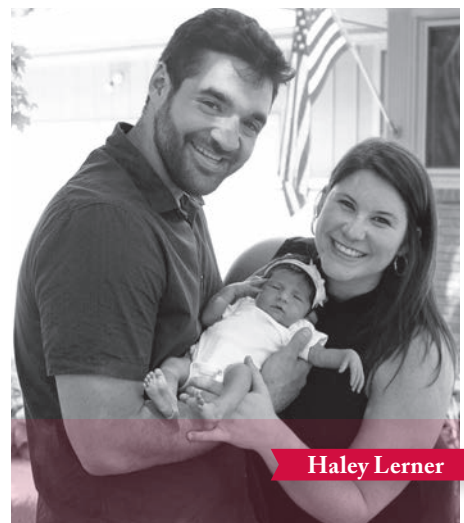
For more information contact PJ Library Coordinator Carrie Fink at 952-417-2139 or cfink@jfcsmpls.org.



Lauren Schefman



Terri Lindenbaum



Haley Lerner

*Jeffrey Locketz Memorial Endowment
for Kosher Meals on Wheels
and Senior Services programs*



With legacy gift in his name, Jeffrey Locketz' family knows he would be proud about helping others

After Jeffrey Locketz died in the spring, his family members who were in charge of his trust knew a place he would have wanted to establish a legacy gift – JFCS. This fall, they created an endowment, the Jeffrey Locketz Memorial Endowment for Kosher Meals on Wheels and Senior Services programs.

Neena Lurvey, Jeff's cousin, said he was a grateful recipient of help from JFCS' Shopping and Kosher Meals on Wheels services. "He had a friend in Sholom home and an aunt who had lived there, but he wasn't ready yet to give up his independence," she said. "JFCS helped him stay in his apartment when he could no longer take the bus."

Neena said Jeff was a sweetheart who had a soft spot for charities and non-profits. "As his trustee, it felt appropriate to give this legacy gift to the one agency that he loved and used," she said.

As he aged, Jeff remained close to relatives and friends via the telephone. "He talked to those he was close to daily and we all miss his calls," said Lynne Goodman, his sister-in-law. "Jeff liked to cook and eat, so the food shopping was very important to him."

Barry Schwabe, a longtime JFCS volunteer who attended many agency events with Jeff, said he always looked forward to spending time with him. "Jeff was one of the sweetest guys that I ever met," he said. "He had a great sense of humor, which I think contributed to him being a very happy guy."

Barry added that Jeff would call him regularly just to "shoot the breeze," as he puts it. "His calls always made me smile because they showed how much he cared about staying in touch," he said. "He also had a very distinctive voice and laugh that provided comfort and calm."

In leaving a legacy gift, Jeff's family hopes others will be able to receive support much like he did. "I am so grateful for the cheerful help Jeff received and hope the endowment will help others as much as it helped Jeff," Neena said.



*For more information on starting a Fund or talking further about establishing a future gift, please contact Development Director **Dana Rubin** at 952-542-4803 or drubin@jfcsmpls.org*

a MILLION

Reasons Why

Reason #94,402

"For years, I had a good job and never worried about paying bills or buying groceries. When I was suddenly laid off, it wasn't just about me; my whole family was now at risk. JFCS helped with emergency financial aid so we could pay our mortgage, connected us with food resources, and helped me with my resume, interviewing skills and more to connect me with potential employers. It has been a difficult time and I don't know where we would be today without JFCS."



*Merle and Mort Kane have provided a generous **\$25,000 match** for the Give2020 Annual Campaign. Donors who increase their gift or new donors to the Annual Campaign will get their donation matched! We hope you will take advantage of this generous opportunity.*

Help us reach our goal of \$2.5 million!

♥ Here for all. *Always.*

JFCS Senior Services adjusts to provide support during the pandemic and aligns programs with clinical services

JFCS' Senior Services support the dignity and independence of older adults, providing transportation, grocery shopping, and kosher Meals on Wheels, as well as highly-personalized senior care and caregiver services, including care coordination, care planning consultation and caregiver coaching.

We are excited to announce two new leadership positions in this area – Mental Health and Senior Services Director Jill Kozberg and Senior Services Program Manager Laine Bermansohn, who also manages the Mental Health Support Services (MHSS) program. They recently spoke about how Senior Services has responded to the pandemic and what their goals are for the department going forward.



Jill Kozberg



Laine Bermansohn

welcome.

Why did your new position appeal to you?

Jill: Having been a program manager in Counseling, Mental Health Support Services (MHSS), and Intake and Resource Connection (IRC), I was interested in being able to do more strategically with programs and with the agency as a whole. The re-organization presented so many exciting possibilities. With our current strategic plan, we had already been working collaboratively across the agency and across the community, but with Senior Services coming under the clinical umbrella, the possibilities really grew. The idea that we will approach Senior Services and how we work with older adults and their caregivers through a clinical lens is exciting. This means that in addition to the concrete/physical/financial needs individuals have, we will increase our focus on the emotional needs they may have.

Laine: I have been very fortunate over the last several years to have been supporting the Mental Health Support Services team for JFCS. Through that work, I have come into contact with an increasing number of older adults and their caregivers who are often having to engage with the higher intensity medical, mental health, and court systems. This emerging trend and the opening of the Senior Services manager position seemed to me like a perfect opportunity to blend the clinical expertise of the mental health programs of JFCS and the care, support, and education that are the highlight of the Senior Services programs.

How have our Senior Services programs adapted to providing services during the pandemic?

Jill: I am so proud of the outstanding work of our staff. They were so flexible and creative as we had to quickly pivot our service delivery models when the pandemic hit. Every decision was made with the safety and well-being of staff and clients in mind. In Senior Services, we worry about vulnerabilities related to age and health challenges of seniors and their caregivers, and we are also concerned about the loneliness, isolation, and grief and loss many of our clients are facing.

Laine: Some changes have been somewhat minor – e.g. Meals on Wheels is now a contactless drop off system – and some have changed the service delivery completely – e.g. Care Coordination, Care Planning Consultations, and education programming have all had to adapt to a telephone or online platform.

We realized very quickly that the pandemic was likely to hit the older adult/caregiver population hard; as a result, we made it common practice for clients receiving any service from Senior Services to receive a regular wellness check from a JFCS staff or volunteer. We continue to monitor the wellbeing of all clients through the challenges of the COVID period.

What are your goals for Senior Services going forward?

Jill: We're excited about so many possibilities. We want to continue to support our seniors and caregivers in ways that helps them live rewarding lives as independently as possible. We want to be proactive and anticipate the needs of seniors and caregivers. As we all age, we continue to learn about these needs. We also intend to continue to build the ways in which we support caregivers. Being a caregiver can be so challenging in so many ways; their needs for support can be great, as are the demands on their time and energy.

Anything else you would like to add?

Laine: I would like for our community to know that our work continues and we are here to meet needs big and small. We are providing new program offerings, taking new clients, engaging in family consultation and planning support, among all the other resources JFCS has to offer in this department and throughout the agency.



For more information on JFCS Senior Services:
call 952-546-0616 or visit www.jfcsmpls.org

Being a caregiver is hard. I'm
always worried and overwhelmed.
I need help but don't know
where to get it.

Who gets to decide what
happens to dad?

How do I get my dad
to the doctor's office
when I need to be
at work?

I'm taking care of my mom
and my own family. I am really
stressed and don't know
what to do first.

How do I decide
when my mom needs
services in her home?

I don't know where to begin.



just call
JFCS
952-546-0616

Senior Services.

Individualized care with boundless compassion

Changes are happening and you don't know where to start. Caregiving is hard and lonely. JFCS can support your decision making, make connections to resources, provide education and help you maintain balance in your own life. If you are feeling overwhelmed *just call JFCS and we can help.*

Hag Sameach Program

It has been a difficult year.
How will I be able to give
holiday gifts to my kids?

We are really struggling
and could use help, but I don't
want my friends or family to
know right now.
Who can I turn to?

I really want a menorah
and candles to celebrate
Chanukah this year,
but I'm not able
to get out to buy them.

I don't know where to begin.

just call
JFCS
952-546-0616

JFCS Hag Sameach (Happy Holidays) Program.

Confidential assistance with boundless compassion

Hag Sameach ensures that people in our community who are in need of extra assistance, both during the holidays and throughout the year, have a resource for holiday gifts and essential items. If you are having hardships in celebrating the holidays – whether it is due to financial difficulties, medical reasons, isolation, or something else – we are here for you! Just call JFCS and our compassionate staff can connect you with the program to receive gifts and ritual items for individuals and families in a confidential manner. Here for all. **Always.**



J-Pride adjusts its services during pandemic and welcomes new coordinator, Miriam Graham

J-Pride is JFCS' program that works to engage Minnesota based Lesbian, Gay, Bisexual, Transgender, and Queer (LGBTQ) Jews and their allies to come together for social events, community gatherings, celebrations, and educational opportunities. Miriam Graham, J-Pride's new Program Coordinator, recently spoke about their goals for the program.



Why did the J-Pride Coordinator position appeal to you?

I've lived in Minneapolis for almost five years, and I've been a participant and leader at J-Pride events since I moved here, as well as organizing my own Queer Jewish spaces. When I heard that this job was opening up, I was thrilled—here's a way I can do what I'm already doing, but professionally and with the resources I need.

What have been some of the biggest successes and challenges for J-Pride during this difficult year?

Oy, training in on a new job remotely has been difficult, to say the least. Not being physically at Pride this summer I think was hard for a lot of reasons for participants and for us. But despite the trickiness of isolation, J-Pride has had really great success with our weekly Havdalah event with Shir Tikvah, with around 20 participants weekly.

What are your goals for J-Pride, both in the short-term and the long-term?

For the High Holidays, we held a combination of Zoom offerings, as well as distanced in-person events outside. Moving forward, I'm interested in finding alternative ways to gathering in the community safely beyond Zoom calls, exploring ritual innovation, doing more professional development and staff trainings, and reaching out to community members who aren't as well represented in our events. I'd like to strike a good balance between ritual/religious, social/secular, and educational events.

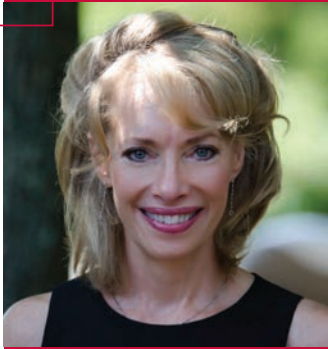
Anything else you would like to add?

At the intersection of Queer and Jewish identities – not to mention those participants who self-identify as being mentally or physically disabled, non-white, or other marginalized identities – J-Pride participants face oppression on many levels. More than anything, I want our participants to feel supported, uplifted, taken care of, and listened to. Especially in this changing global moment, I want people to know that J-Pride and JFCS as a whole is a resource people can turn to, and that we'll be here to help our participants however we can.



For more information on upcoming events and programming, "like" J-Pride on Facebook.

STAFF ACCOMPLISHMENTS



Employment Counselor **Jodi Alter** completed her Global Career Development Facilitator (GCDF) certification. In order to receive it, participants must complete a 120-hour (minimum) comprehensive training of the 12 GCDF core competencies using an approved curriculum.



Community Services Program Director **Amy Weiss** has joined the Minnetonka Family Collaborative Executive Committee after two years as a member of the Collaborative. Its mission is to support and develop the well-being of all youth and families in the Minnetonka School District in partnership with the community.



Inclusion Program Coordinator **Stacey Spencer** was named an Advisory Council Member for the National ARC Center for Future Planning. Council members seeks to provide reliable information and assistance to people with intellectual and developmental disabilities, their family members, and the professionals who support them to plan for the future in areas such as person-centered planning, decision-making, housing, and financial planning.



Jewish Community Addiction Services Coordinator **Sharon Goldetsky** has been named to the board of the Barbara Schneider Foundation. The foundation's mission is to eliminate the criminalization and abusive treatment of people with mental illness by improving public safety and mental health systems through proactive training and public education. Staff members of the foundation are involved in training mental health crisis response for police officers.



Community Conference Coordinator **Tabitha Benci DeRango** is a member of the WCA Foundation ("Women Empowering Women"), which recently became a Signature Fund of the Minneapolis Foundation; a new board member of the St. Paul Festivals Association; and serves as a Racial Justice facilitator for the Minneapolis YWCA.

NJHSA joins national non-profits affirming commitment to racial justice and equity

The Network of Jewish Human Service Agencies (NJHSA), which JFCS is a member of, is proud to have joined 33 other national non-profit organizations in drafting a Statement of Guiding Principles to Advance Racial Equity and Justice. Faced with this moment of urgency and entrusted by communities to lead in crisis, **we affirm and commit to these values as a guide in our collective efforts to advance equity and justice, including:**

Dismantling systemic racism, redressing past discrimination, and advancing equity within our organizations, in our communities, and in our nation—through our organizational policies and practices, in our programmatic work and by advocating for changes in public policy and law.

Achieving a more comprehensive approach to justice and safety that invests needed resources in schools, child care, mental and behavioral health, affordable housing, job training, and other supportive programs and services that contribute to healthy, strong, safe, and vibrant communities.

Listening to and lifting up the voices and experiences of impacted people and communities, particularly the voices of young people in those communities who will lead future generations.

Examining the extent to which policy proposals and legislation decrease racial disparities and oppression.

Judy Halper, Board Chair, NJHSA

Joan Grayson Cohen, Chair, NJHSA Diversity, Equity & Inclusion Committee

Reuben Rotman, President & CEO • Darcy Hirsh, NJHSA Washington Representative

justice & equity

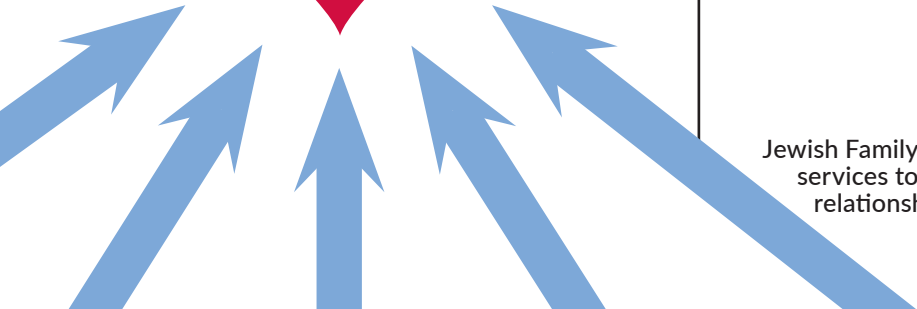


BID FOR GOOD NESS, SAKE!



**JFCS ANNUAL
ONLINE AUCTION
NOV 30-DEC 9**

www.jfcsmpls.org



Non-Profit Org.
U.S. Postage
PAID
Twin Cities, MN
Permit No. 2669

Jewish Family and Children's Service of Minneapolis
5905 Golden Valley Rd. | Golden Valley, Minnesota 55422-4463

MISSION STATEMENT

Jewish Family and Children's Service of Minneapolis provides essential services to people of all ages and backgrounds to sustain healthy relationships, ease suffering and offer support in times of need.

www.jfcsmpls.org