

to our **VALUED SUPPORTERS,**

For centuries, poets, historians, mathematicians, and artists of all types have attempted to distill a year of information into a single picture, graph, lyric or tagline. It's not easy to do. Perhaps one of the best of these efforts most of us remember is the rock musical *Rent*. The playwright Jonathon Larson memorably began the song "Seasons of Love" with the lyrics "Five-hundred, twenty-five thousand, six hundred minutes," bringing to life the amount of time that occurred in one year to a group of bohemians in New York City, scratching out the meanings of their lives. The story is breathtaking and heartbreaking as we learn of the triumphs and tragedies affecting these young lives.



An annual report, even one as compelling as Jewish Family and Children's Service of Minneapolis' traditional accounting to our community of supporters, may not be as dramatic as a Broadway play. However, our numbers and narratives are nonetheless illustrative of the essential work done day in and day out to support the needs of our community. We are proud to share our results – in 2023 we cared for nearly 14,000 people from the Jewish and broad community. This care is reflected in individuals receiving financial assistance; mentors who provided guidance to teens and young adults; and elderly people who were able to age in place and remain in their chosen homes with a little help from a JFCS shopper, a ride from our Garber Transportation program, and more.

Like the story of *Rent*, JFCS exists to help people manage the challenges to their 525,600 minutes of daily living

Like the story of *Rent*, JFCS exists to help people manage the challenges to their 525,600 minutes of daily living. We are here to assist individuals with barriers to employment so that they can successfully find meaningful jobs and achieve self-sufficiency. We are here to provide a weekend emergency shelf-stable box of food to families who are just squeaking by due to unforeseen and unplanned emergencies. We are here to ensure that everyone gets to enjoy the winter and Passover holidays, providing food, ritual items, and gifts when budgets can't stretch far enough to provide these joys. When mental health, depression, anxiety, and other disruptive disorders are preventing children and people of all ages from full participation in daily activities, JFCS is here to offer counseling, case management and therapeutic strategies for coping.

Jewish Family and Children's Service of Minneapolis, established in 1910, is here to serve you, your friends, families, co-workers, and neighbors, and we have more than 30 programs and services

to meet almost any need. **And we do more, because you do more!** We are grateful to our 880 volunteers, our staff of 130, and our hundreds of donors who make sure that from year to year, every 525,600 minutes, all those who seek our help will be welcomed and supported..

Here for all...Always.



Judy Halper

Judy Halper,

Chief Executive Officer

Natalie Zamansky

Natalie Zamansky,

Board President

statement of **FINANCIAL POSITION**

ASSETS

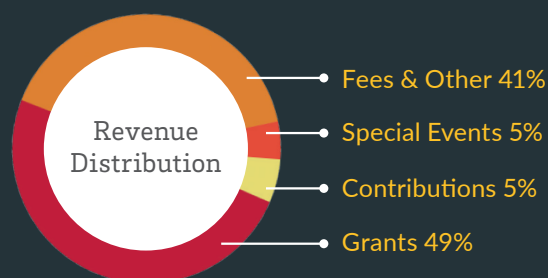
	FYE 2023
Cash and cash equivalents	\$ 3,657,326
Current receivables and other assets	\$ 15,589,265
Investments	\$ 546,296
Long-term assets	-
Property and equipment, net	\$ 9,218,331
Endowment held at JCF	\$ 17,370,766
Total Assets	\$ 46,381,985

LIABILITIES

	FYE 2023
Accounts payable	\$ 140,281
Accrued expenses	\$ 341,844
Deferred revenue	-
Other long-term liabilities	\$ 490,355
Total Liabilities	\$ 972,479
Total Net Assets	\$ 45,409,506

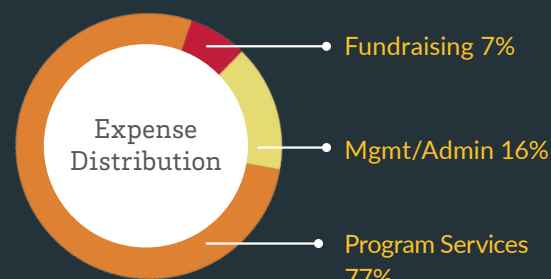
SUPPORT & REVENUES

	FYE 2023
Direct contributions	\$ 458,299
Indirect contributions	\$ 32,309
Non-government grants	\$ 1,470,332
Government grants	\$ 3,108,842
Government fees	\$ 1,399,428
Program service fees, other	\$ 1,126,690
Miscellaneous income	\$ 248,584
Special events	\$ 418,089
Release Restriction	\$ 3,192,029
Endowment/HBSF	\$ 1,238,890
Total Revenues	\$ 12,693,491



EXPENSES

	FYE 2023
Aging Services	\$ 1,703,750
Children's Services	\$ 1,947,653
Clinical & Case Management Svcs	\$ 2,292,514
Community Services	\$ 1,093,691
Career Services	\$ 2,776,699
Fundraising	\$ 901,191
Management/Admin	\$ 1,957,301
Total Expenses	\$ 12,672,799
Change in Net Assets	\$ 20,692



Officers
 Natalie Zamansky
 President
 Abby Barin
 Vice President
 Julie Ezrilov
 Vice President
 Howard Hoffman
 President Elect
 Greg Horwitz
 Vice President
 Betsy Kuller
 Vice President

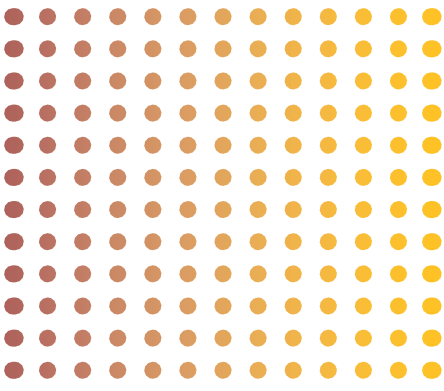
Cindy Tapper
 Vice President
 Josh Hasko
 Immediate Past President
Chief Executive Officer
 Judy Halper
Chief Operating Officer
 Lee Friedman
Chief Financial Officer
 Daniel Belich

Board of Directors
 Stuart Ackenberg
 Ben Barry
 Presidential Appointee
 Shari Barry
 Fran Bayer
 Eric Bressler
 Katie Cera
 Carole Davidson
 Allie Divine
 Rachel Frailich
 Rachel Ganani
 Allison Gelfman
 Marni Gensler

Teri Greenstein
 Emily Grinberg
 Jeff Lifson
 Noah Londer
 Lenny Maly
 Presidential Appointee
 Audra Mintz
 Dan Mosow
 Presidential Appointee
 Stacy Mosow
 Jon Passman
 Andrew Savitz
 Sara Schlipp-Reidel
 Shlomo Schloss

Jaye Snyder
 Andy Stillman
 Hindy Tankenoff
 Beth Virnig
 Rabbi Aaron Weinger
 Robert Yost
 Benjamin Zack

Honorary Advisors
 Lisa Goodman
 Jill Halper
 Danny Kaplan
 Amy Lieberman
 Scott Rubin
 Stacie Usem



PROGRAM HIGHLIGHTS

For nearly 14,000 people from the Jewish and broad community, JFCS remains committed to our mission to provide essential services to help sustain healthy relationships, ease suffering and offer support in times of need. We are *Here for all. Always.*

● ● ● COMMUNITY SERVICES

The **Hag Sameach** program made a huge impact during both the winter holidays and Passover in the spring. Our winter program provided gifts to almost 800 people of all backgrounds, including families, seniors, hospital programs and adults with disabilities. Beyond the Holidays, which provides necessary items throughout the year, served 40 families – a significant increase over 2022.

Hag Sameach is also our largest volunteer program, where **hundreds of volunteers** filled 380 shifts in gift sorting, prepping, wrapping and more leading up to the winter holidays. Another program with a huge volunteer impact is Garber Transportation, where volunteers provided 326 rides to doctor’s appointment and errands, totaling 5,699 miles.

Caring Connections provided opportunities for Jewish adults with disabilities to take part in social and educational events and engage in Jewish holidays, celebrations and traditions. This included concerts, plays, Passover seders, volunteer opportunities, and more. In addition, participants attended a series of art classes, creating pieces that were exhibited at the Sabes JCC in early 2024.

The **Food Security Program** distributed 120 emergency food boxes – a 47 percent increase over the prior year. These boxes are regularly distributed to clients from all of JFCS’ programs and services, based on need. The program also provided direct support to 156 individuals and food security outreach via material, phone consult and community tabling to another 4,189.

PJ Library Minneapolis strengthened Jewish identity by sending Jewish-content books and music to families and also hosted regular community events for kids and families. It distributed

16,655 books and hosted 65 events for families raising Jewish children to meet up and engage with each other.

J-Pride created community through queer-focused Jewish programming for LGBTQ+ Jews and their allies throughout the Twin Cities. In addition to its presence at the Twin Cities Pride festival, J-Pride hosted events throughout the year, including a Tu B’Shvat seder, traveling Shabbats, events for Queer Families through a partnership with PJ Library, and more.

● ● ● CAREER SERVICES

Career Services’ **IT Pathways** program continued to connect individuals with the needed resources to prepare for success in IT jobs. It awarded \$500,000 in scholarship funding to 32 low-income Minneapolis residents, enabling them to get training in software development and UX design. Thirteen of these obtained employment in the field at the average wage of \$36/hr.

The **Dislocated Worker** program continued to provide career counseling to laid-off individuals to help them make strategic decisions about their professional futures. Those who qualified received training funds to develop new skills, update existing skills, or obtain required certifications or credentials. The program served 140 laid-off workers; 34 of these got new jobs, with an average wage of \$34/hr.

Vocational Rehabilitation, which provides personalized services to individuals with disabilities seeking to improve their work lives or find employment, served 87 people – up from 77 in 2022.

Following an update and refresh to the office space, the **Minnesota Family Investment Program** is consistently staffing



J-Pride at the Twin Cities Pride Parade



Senior Services’
Memory Café volunteers



Watercolor artwork
by Memory Café
participants



Hag Sameach program volunteers



its Minneapolis office to provide another meeting option for program participants. The program provides support for families to help them move toward self-sufficiency through employment and overcome barriers such as childcare, food security, education, and transportation.

● ● ● **COUNSELING & MENTAL HEALTH SERVICES**

The **JFCS Counseling** program expanded its offerings – our therapists now offer SPACE therapy designed to treat children with anxiety; Discernment Therapy designed for couples deciding whether to move forward in their relationship or divorce; and Walk and Talk Therapy, an outdoor alternative to sessions held in an office.

To address increasing and changing demands, our **Mental Health Support Services** added a Behavioral Health Case Aide. This has allowed us to streamline our services to clients, which require more intensive supports due to limited access to mental (and physical) healthcare throughout the pandemic, along with worsening food and housing instability.

● ● ● **EDUCATION & LEARNING**

ParentChild+, a free home visiting program that promotes creative ways to learn through play, increases parenting skills and helps children prepare for school, served 308 children and their families through nearly 15,000 home visits.

Professional and Community Education, known previously as Family Life Education, re-branded with a new name that better

represents the services it provides to professionals, families, and the community. The program, which offers trainings, coaching, professional development, and community education on diverse topics, provided 31 trainings and events, serving 1,154 people.

The **23rd Annual Mental Health Education Conference** continued to build and strengthen movement in improving mental health access, understanding, and education in the community. More than 260 people attended the event, which featured keynote Sophie Riegel, a recent college graduate who is an author, professional speaker, certified coach, and mental health advocate.

● ● ● **SENIOR SERVICES**

Senior Services' re-launch of its Accompanied Transportation service was a huge success. The program continues to see increased requests for caregiver supports, case management, volunteer outreach visitors, transportation, PRISM food shelf deliveries, shopping, and accompanied transportation.

Our **Holocaust Survivor Support Services** rolled out several new initiatives, including grocery gift cards, medical reimbursement, dental expense reimbursement, and emergency financial assistance.

Powerful Tools for Caregivers classes, which JFCS has offered for several years, expanded by partnering with the Minnesota JCC Sabes campus and the Lennox Community Center to lead classes for their participants. Our **Memory Café** continued to serve as a comfortable, safe environment for people with memory loss and their caregivers.



Caring Connections participants creating art



ParentChild+ program graduate



23rd Annual Mental Health Education Conference